

Salon
2021

ARTS
ON
TOUR



Welcome to Salon

We are delighted to be gathering together for our seventh Salon event. We were all set to present this year's Sydney Salon in person at the East Sydney Community and Arts Centre, but COVID had other plans. We're massively disappointed – but also very grateful that we can still find a way to connect artists, producers and presenters from across NSW and showcase the brilliant work being made in our cities and towns.

The interest in Salon keeps growing, and this year we had over 80 Expressions of Interest to pitch at Salon. It's incredibly exciting to read about new work being made – both the diversity of stories, ideas and artistry and the sheer number of works. You'll hear from artists about 30 of these productions – a record number for us. There could have been many more. We have prioritised works that have premiered and are ready to tour, but you'll find on these pages some awe-inspiring works in development, including Legs on the Wall's *Eden*, featured on the front cover. You won't hear from these artists today, but you can be sure to hear from them at a future Salon.

The online format has necessitated some changes to how we'll run this event. If you've been to a Salon before, you'll know that we usually feature as many 'pitches' from NSW venues as we do producers. This time you'll hear from less venue managers, but more producers.

On the plus side, today's Salon will be captioned and recorded, so if you're not able to be with us today, you can watch it later. (And you can watch it again!)

These are difficult times, to say the least. One of the things that keeps me inspired is ticket sales across regional NSW – when our artists can take to the stage, theatre is booming. Live arts experiences are in demand – more than ever.

Thank you for joining us for this event online. My hope is that you leave feeling connected to your colleagues, inspired by the work you hear about, and part of an industry that makes a difference to the lives of many.

Take care,
Antonia, Kate and the Arts on Tour team

Contents

Arc
Alphabet Sydney: All Aboard
A Murder Story, Retold
Annus Horribilis
Awkward
Between Tiny Cities
Black Sun/Blood Moon
Bremen Musicians Rock n Roll
Caribé Havana Return
Chop Chef
Coil
Curb
Cursed!
DALL: Hallucinogenic Toreador
demi-DEMO
Dictionary By A Bitch: The Journals of Bee Miles
Disenchanted: A Cabaret of Twisted Fairy Tales
Don't Make Me Play Piano Man
Dorr-e Dari: A Poetic Crash Course in the Language of Love
Dunny Tunes
Eden
Explicit Contents
Fall! Falter! Dance!!!
How I Practice My Religion
Fishy Tales
Fitson and Dan
Flamenco For Everybody
Flow
French Cafe
Game of I-Lands
Glass Child
Hot Mess
Icarus
Into the Forest
Introducing Aunty Jude
JUST
Layer
Le Voyage
Lightness of Dark
Limits
Loveys Actually
Mea Culpa

Erth Physical & Visual Inc
Critical Stages Touring
Ninefold
Sydney Conservatorium of Music
Catapult Dance Choreographic Hub
Nick Power and Intimate Spectacle
Critical Stages Touring
Natalie Mitz Productions
Spare Parts Productions
Blush Opera
re:group performance collective
Curious Legends Limited
Belvoir
Stray Dogs Theatre
Branch Nebula
Deborah Tobias Creative Management

Eliane Morel

Steven Kramer
PYT Fairfield

Midnight Feast
Legs on the Wall
Rhannon Newton
Ryuichi Fujimura

Creative Caring
Felicity Burke
Annalouise Paul Dance Theatre
NORPA
Sprung!! Dance Theatre Inc
Australian Performance Exchange
The Farm and Performing Lines
The General Public
Bare Witness Company
NORPA
Hurrah Hurrah
Redline Productions
Stalker Theatre & Box of Birds
Step & Holes and MILKE
Little Hartley Music
Bonnie Curtis Projects
The Loveys Music
Cloe(F)Projects

Contents

<i>Mountain</i>	Stalker Theatre and Box of Birds
<i>Mrityu</i>	Arjunan Puveendran and Performing Lines
<i>Narcifixion</i>	Anton Projects
<i>Nature Is Healing</i>	Too Rude and Performing Lines
<i>Not Today</i>	Rogue Projects
<i>Ocean Spirit Rising</i>	DTCP
<i>Oh, How I Dreamt of Things Impossible</i>	Sprung!! Dance Theatre Inc
<i>Party Girl</i>	Lucy Heffernan
<i>Phly Crew Live</i>	Phly Crew
<i>RED</i>	Liz Lea Dance
<i>Roomba Nation</i>	Hurrah Hurrah
<i>Shifting Lines / Shifted</i>	Dr Laura (Amara) Osweiler
<i>Slow Burn</i>	Q Theatre
<i>Sons of Sun - Elvis, Jerry Lee, Johnny and Me</i>	Type Faster Productions
<i>Spike</i>	Little Wing Puppets
<i>Stage Fright ein Kabarett</i>	Jude Bowler Entertainment
<i>Thai-riffic!</i>	FEM Presents
<i>The Beanies EGG-straordinary Day</i>	The Beanies Music Pty Ltd
<i>The Box Show</i>	Junkyard Beats and Critical Stages Touring
<i>The Construct</i>	Circus Monoxide
<i>The Dismissal: An Extremely Serious Musical Comedy</i>	Squabbalogic with Sydney Theatre Company and Canberra Theatre Centre
<i>The Hen House</i>	Josip Draisma
<i>The End of Winter</i>	Siren Theatre Co
<i>The Illiad: Out Loud</i>	Critical Stages Touring
<i>The Linden Solution</i>	Ratcatch Theatre
<i>The Lobster</i>	Proper Motion
<i>The Point</i>	Liz Lea Dance
<i>The Screwtape Letters</i>	Clock and Spiel Productions
<i>The Spooky Men's Chorale</i>	The Spooky Men's Chorale
<i>The Surge</i>	Ensemble Offspring
<i>The UnderLibrary of UnOfficial Histories</i>	NORPA
<i>The World Experience</i>	Ganathipan
<i>Tim</i>	Christine Dunston Productions
<i>Tiny Universe</i>	Shopfront Arts Co-op and Milk Crate Theatre
<i>TWO</i>	Raghav Handa and Performing Lines
<i>UFO</i>	Malcolm Whittaker
<i>Ulster American</i>	Outhouse Theatre Co
<i>Urinetown The Musical</i>	Heart Strings Theatre Co
<i>Urza and the Song in the Dark</i>	Matriark Theatre
<i>Victor Martinez Parada in Concert</i>	Les Currie Presentations
<i>Voices Of Joan</i>	Janie Gibson
<i>Wild Thing</i>	Wild Thing Production
<i>Wolf Lullaby</i>	Echo Theatre
<i>You're Not Special</i>	Rogue Projects



Arc

ERTH - VISUAL & PHYSICAL INC

ABOUT THE PROJECT

Arc: from the latin and loosely translated it means both a place to keep livestock but also somewhere to keep something precious. Our focus is on animals that are rare and/or critically endangered which plays on the biblical sense of the word arc. Arc will combine a beautiful and elaborate array of puppets from elephants to snow leopards, from lead beater possums to rhino's, birds, bees, fish, and bats and present them in a space that transforms into the environments of each creature. Arc combines the element of talk show, asking some members of the audience to come onto stage and talk about their favourite animals or experiences.

ABOUT THE COMPANY

ERTH creates incredible creatures and releases them into the world through their shows and public incursions. ERTH is Sydney based and works across all spectrums of touring from local to international, from intimate workshops to huge public events. ERTH has been creating for over 30 years and is beloved by all.

IN DEVELOPMENT

ARTFORM
Theatre, puppetry

AUDIENCE
Children, family

LENGTH
60 mins

CONTACT

Scott Wright
scott@erth.com.au

FOR MORE
erth.com.au

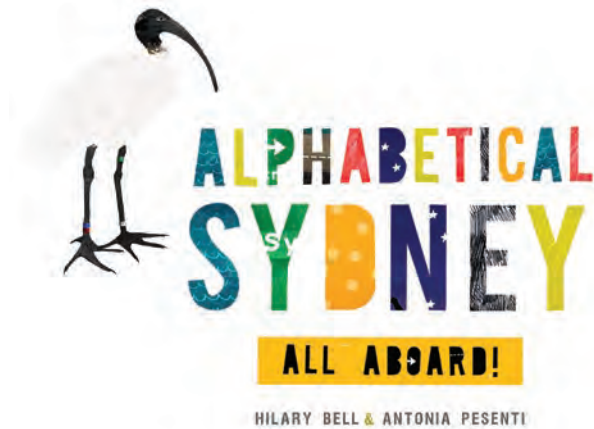
CREATIVE TEAM

Director and Writer Scott Wright
Head Design Steve Howarth
Lead Artist Gabrielle Panannan
Collaborating Artists to be announced

PRODUCTION HISTORY

N/A

Photo by James Brown



IN DEVELOPMENT

ARTFORM
Musical theatre

AUDIENCE
Family

LENGTH
50 mins

CONTACT

Chris Bendall
chris@criticalstages.com.au

FOR MORE
criticalstages.com.au

Alphabet Sydney: All Aboard

CRITICAL STAGES TOURING

ABOUT THE PROJECT

Inspired by the best-selling picture book *Alphabetical Sydney*, this exciting new stage production for children combines music, puppetry, theatre and creative play, taking audiences of all ages on an adventure around the world's most famous harbour city. Our tour guides – the chaotic Ibis and tough but tender-hearted Nanna – take us on a trip to discover Sydney in all its diversity. *Alphabetical Sydney: All Aboard* is a celebration of the ocean baths, noisy streets, and magical corners that make this city unique.

ABOUT THE COMPANY

Critical Stages Touring is Australia's national touring theatre company discovering and developing outstanding independent theatre for audiences everywhere. We create live performing arts experiences that can travel, connecting these with diverse regional communities, and fostering a sustainable and diverse national independent theatre sector.

CREATIVE TEAM

Writer Hilary Bell and
Antonia Pesenti
Composer Greta Gertler Gold
Performed by Luke Escombe and
Justine Clarke

PRODUCTION HISTORY

N/A



TOUR READY

ARTFORM
Theatre

AUDIENCE
Teen, adult

LENGTH
60 mins

CONTACT

Erica Brennan
ninefold@ninefoldensemble.com

FOR MORE
ninefoldensemble.com

A Murder Story, Retold

NINEFOLD

ABOUT THE PROJECT

A Murder Story, Retold is the telling and retelling of a suburban murder performed to music from Max Richter's re-compositions of Vivaldi's *Four Seasons*. A cramped domestic dwelling sets the scene for a revenge killing committed by poisoning. The narrative warps and shifts according to the music selected for each retelling.

A Murder Story, Retold interconnects physical scoring, music and dialogue and magnifies the physical nuances and details of the ordinary world. Backed by symphonic music, we find a sense of the grandeur in the common and the everyday

ABOUT THE COMPANY

Ninefold is a Sydney-based theatre ensemble creating work that is intense, precise and imaginatively rich. Each show a sensorial harmonic experience that envelopes audiences in operatic grandeur. Their powerful signature style is honed by a commitment to cultivating a shared language through regular physical performance training.

CREATIVE TEAM

Director Shy Magsalin
Performers & Devisers
Erica J Brennan, Gideon Payten-
Griffiths, Shane Russon &
Shy Magsalin
Lighting Designer Liam O'Keefe
Sound Artist Melanie Herbert
Production & Stage Manager
Zachary Bush

PRODUCTION HISTORY

The Flying Nun 2019, Global Fringe/
Sydney Fringe (Live and Online)
2020

Photo by Liam O'Keefe



TOUR READY

ARTFORM
Cabaret opera

AUDIENCE
Family

LENGTH
120 mins

CONTACT

Dr Narelle Yeo
narelle.yeo@sydney.edu.au

FOR MORE
music.sydney.edu.au

Annus Horrobillis

SYDNEY CONSERVATORIUM OF MUSIC

ABOUT THE PROJECT

Annus Horribilis is a faux baroque cabaret opera by Tom Rimes based on the experiences of the Royal Family in 1992, which has been workshopped in Sydney and online during 2021. This is a multimedia work using animations to satirise the domestic machinations that occur when you have a very bad year. It is the perfect metaphor for the emergence from Covid-19 restrictions.

CREATIVE TEAM

Director Dr Narelle Yeo
Composer Thomas Rimes
Producer Jack Stephens & Sydney Conservatorium

PRODUCTION HISTORY

N/A

ABOUT THE COMPANY

The touring arm of the Conservatorium matches professional and student artists and musicians into regional communities to work collaboratively to produce a professional opera or musical in community, with the goal of improving performance and collaboration opportunities for regional artists as well as emerging artists.

Photo by Jack Stephens



TOUR READY

ARTFORM
Dance

AUDIENCE
General

LENGTH
60 mins

CONTACT

Cadi McCarthy
director@catapultdance.com.au

FOR MORE
catapultdance.com.au

Awkward

CATAPULT DANCE CHOREOGRAPHIC HUB

ABOUT THE PROJECT

Experience the wit and wisdom of the socially awkward. Starting from a pick up line that bombed? Tongue ties at meeting strangers? Last party over before the late news starts? A group of people come to a party, having been invited by friends of the host. They don't know each other. They don't even know anyone else at the party. They don't know whose house it is and their friends don't turn up. Sound familiar?

CREATIVE TEAM

Directors Cadi McCarthy and Craig Bary
Performed by Angelyn Diaz, Craig Bary, Alexander Abbot, Belle Beasley, Mikayla Nangle, Nicola Ford and Alexandra Ford

PRODUCTION HISTORY

Newcastle, Singleton, Muswellbrook, Clarence Town, Merriwa 2021

ABOUT THE COMPANY

Catapult Dance Choreographic Hub is a contemporary dance and multi-arts organisation for choreographers, professional dancers, multidisciplinary artists, emerging artists and young people. Based in Newcastle, NSW, we provide a support structure for all participants to develop their professional practice, gain skills and collaborate across disciplines through commissions, professional choreographic residencies, international exchanges, collaborative intensive practice, masterclasses, outreach programs and community classes.

Photo by Ashley de Prazer



TOUR READY

ARTFORM
Dance

AUDIENCE
Mixed

LENGTH
40 mins

CONTACT

Harley Stumm
harleystumm@gmail.com

FOR MORE
intimatespectacle.com.au

Between Tiny Cities រវាងទីក្រុងតូច

NICK POWER AND INTIMATE SPECTACLE

ABOUT THE PROJECT

In *Between Tiny Cities*, រវាងទីក្រុងតូច dancers Erak Mith, from Phnom Penh, and Aaron Lim, from Darwin, use the rituals, movement styles and language of their shared hip-hop culture to reveal the dramatically different worlds that surround them and uncover the choreographic links that unite them.

Choreographed by internationally-renowned Sydney hip-hop dance artist Nick Power and accompanied by the beats and sound design of Jack Prest, the work blends the raw, wild energy of b*boy battles with skilful improvisation and choreography, offering a cross-cultural perspective on style, culture and locality.

ABOUT THE COMPANY

Intimate Spectacle is an independent producing company working across contemporary performance genres. Intimate Spectacle is committed to touring its artists to fully exploit each work's audience potential and to develop viable, sustainable careers. Harley is highly experienced in engagement touring; working with presenters to make new forms of performance and new models of presentation and touring viable.

CREATIVE TEAM

Choreographer Nick Power
Dancers Aaron Lim & Erak Mith
Sound Designer Jack Prest
Designer Bosco Shaw
Dramaturg Lee Wilson
Original Creative Producer Britt Guy Accomplie
Tour Producer Harley Stumm

PRODUCTION HISTORY

Extensive

Photo by Thoeun Veassna



IN DEVELOPMENT

ARTFORM
Theatre

AUDIENCE
General

LENGTH
50 mins

CONTACT

Chris Bendal
chris@criticalstages.com.au

FOR MORE
criticalstages.com.au

Black Sun/Blood Moon

CRITICAL STAGES TOURING

ABOUT THE PROJECT

Two intertwining storylines – one magical, the other all too real – bring two unlikely heroes to the stage in a new work inspired by the Fridays for Future student-led protests of 2019. *Black Sun/Blood Moon* follows Maddy, a ten-year-old climate champion, and Katie, an underachieving assistant of a climate-denying politician, as they set out to save the planet. Maddy's journey will put her at increasing risk as she takes her message to the powers that be, while Katie will find herself on the back of eagles and dolphins as she attempts to fulfill a fantastical quest from the future.

ABOUT THE COMPANY

Critical Stages Touring is Australia's national touring theatre company discovering and developing outstanding independent theatre for audiences everywhere. We create live performing arts experiences that can travel, connecting these with diverse regional communities, and fostering a sustainable and diverse national independent theatre sector.

CREATIVE TEAM

Writer and Director Chris Bendal

PRODUCTION HISTORY

N/A

Photo by Chris Bendall



TOUR READY

ARTFORM
Theatre

AUDIENCE
Family

LENGTH
70 mins

CONTACT

Natalie Mitzikis
musical.island@outlook.com

FOR MORE
snmitz.com

Bremen Musicians Rock n Roll

NATALIE MITZ PRODUCTIONS

ABOUT THE PROJECT

The famous tale of *The Bremen Musicians* by Brothers Grimm is given an original twist in this new and exciting show. Weaving an abundance of fun with popular kid- friendly songs, incorporating features cool rock n roll , funk, country styles and catchy, original tunes.

An hour of joy and laughter with a fable crew of funny animals, who make their way through trials and tribulations in an effort to become the best band in the land! Through teamwork and self-belief, following their dreams, the animals achieve great things, and make unexpected friends along the way!

ABOUT THE COMPANY

Natalie Mitz Productions is a place for original, uplifting live shows for children and adults alike, focusing on learning and appreciation of music as essence of our life.

CREATIVE TEAM

Director Natalie Mitzikis
Performed by Sarah Pearce and Cole Burgess
Vocalist Orissa Anthony
Audio Design Peter Truong
Sound Effects Eitan Muir
Stage Manager Yulia Tyshchenko

PRODUCTION HISTORY

Bondi, Kogarah, Redfern 2021

Photo by Natalie Mitzikis



TOUR READY

ARTFORM
Music, Dance

AUDIENCE
General

LENGTH
75 mins

CONTACT

Gai Bryant
gaibryant@hotmail.com

FOR MORE
gaibryantspareparts.com

Caribé Havana Return

SPARE PARTS PRODUCTIONS

ABOUT THE PROJECT

Caribé Havana Return pairs original Cuban-inspired music with impressive choreography by Adrian Medina against a backdrop of archival footage from 80s Cuba accompanied by an 8-piece band. The production integrates music and dance with audience participation through storytelling, chanting and rhythm allowing the artists to share their culture and skills in a new way. The culmination of this blend of elements is a unique stage performance, making the show a memorable and engaging experience. The groups sound stems from Gai Bryant's compositions which embody a maverick interpretation of traditional and classic styles that are performed with elan and spirit.

ABOUT THE COMPANY

Caribé's music and dance performances continue to evolve through the exchange of knowledge and concerts with international Cuban artists including Grammy-nominated pianist/composer Elio Villafranca and Adelaide-based Cuban trumpeter/composer Lazaro Numa. The privilege of working with Adrian, Yarima, Cruz, Emma, Israel and Moro is ongoing as they share their art and the evolution of their culture in Australia.

CREATIVE TEAM

Gai Bryant, Lee McIver and Adrian Medina

PRODUCTION HISTORY

Extensive

Photo by Gai Bryant



TOUR READY

ARTFORM
Opera

AUDIENCE
General

LENGTH
90 mins

CONTACT

Jermaine Chau
blushopera.sydney@gmail.com

FOR MORE
blushopera.com

Chop Chef

BLUSH OPERA

ABOUT THE PROJECT

Chop Chef, the quirky brainchild of author Julie Koh and composer Paul Smith, is a satirical operatic comedy in which six contestants from around Australia enter the cooking battlefield of a fictional reality television series *Chop Chef*. Faced with unusual and extreme cooking challenges. Kitty, Tom, Andy, Victoria, Kale and Renée compete to remain alive in the game and avoid facing the chop, literally. Three omnipresent judges preside over the shiny kitchen arena will decide the fate of each contestant but not all is as it seems. Perhaps the tables will turn....

ABOUT THE COMPANY

Blush Opera is a fun-loving boutique opera company out to make opera going a serious pastime for future generations.

CREATIVE TEAM

Librettist Julie Koh
Composer Paul Smith
Directors Kenneth Moraleda & Nicole Pingon
Conductor Luke Spicer
Set & Costume Designer Keerthi Subramanyam
Lighting Designer Kate Baldwin
Video Designer Susie Henderson
Sound Designer Daniel Herten
Production Manager Tyler Fitzpatrick
Stage Manager Hannah Crane

PRODUCTION HISTORY

Riverside Theatre 2021

Photo by Lin Jie Kong



TOUR READY

ARTFORM
Theatre

AUDIENCE
15+ years

LENGTH
60 mins

CONTACT

Malcolm Whittaker
malcolm.whittaker@gmail.com

FOR MORE
regroupperformancecollective.org/coil

Coil

RE:GROUP PERFORMANCE COLLECTIVE

ABOUT THE PROJECT

Coil is a new theatre performance about nostalgia, loneliness, friendship and viability. It is the latest work of live-cinema from re:group performance collective, and the first to bring in real people using interview material with local ex-video rental storeowners. Expanding live-cinema practice by discussing the theme of viability that has previously prevented the re-staging of their work to date, *Coil* presents a single performer capturing cinematic shots with a camera operator. It begins at a meditative pace, before building in momentum as over 200 shots are taken in front of the audience. In between shots, the story is told of John and Marion Wallace, who owned the Leading Edge video rental store in Wollongong, until its recent closure. It is a story steeped in nostalgia, for a place of community activity as much as a place for simply renting movies.

ABOUT THE COMPANY

Dr. Malcolm Whittaker works as an artist, writer, researcher, performer, producer and teacher. In 2021 he is working on projects at Shopfront, Punctum, PACT, Brand X, Cementa Festival, Bondi Festival, Griffin Theatre Company, Merrigong Theatre Company, Art Gallery of NSW and the University of Wollongong

CREATIVE TEAM

Concept Steve Wilson-Alexander
Created and performed by Solomon Thomas, Steve Wilson-Alexander and Carly Young
Screenplay Mark Rogers
Video Design Solomon Thomas
Automation programming Chris Howell
Sound Design Liam Halliwell
Production Manager Alistair Davies
Creative Producer Malcolm Whittaker

PRODUCTION HISTORY

Sydney 2021

Photo by Diana Domonkos



IN DEVELOPMENT

ARTFORM
Visual theatre

AUDIENCE
Family

LENGTH
20–120 mins

CONTACT

Mitchell Reese
curious@curiouslegends.com.au

FOR MORE
curiouselegends.com.au

Curb

CURIOUS LEGENDS LIMITED

ABOUT THE PROJECT

Curb follows on as a creative development from the success of *Taylor's Run*, which premiered at the New Annual Festival, Newcastle, earlier this year. Using shadow puppetry, multimedia projections, and large scale interactive puppets, the audience is taken on a journey to the local tip. The story follows a lonely banana peel -discarded and thrown away - as it returns in larger-than-life proportions. An interactive, family-friendly performance, this production is created as a self-contained drop-in activation for outdoor festivals and events. It will premier late November 2021 in Newcastle's Gregson Park, in partnership with Newcastle City Council.

ABOUT THE COMPANY

We use visual theatre to tell stories and empower community collaborators to share theirs. Our work is primarily for family audiences. We make work for site specific locations, large outdoor spectacles, roving street performance and shows for traditional theatre spaces. Our work has appeared throughout Australia, Germany and Indonesia.

CREATIVE TEAM

Artistic Director Mitchell Reese
Head of Design Connor Fox
Creative Producer Shani Moffat
Associate Producer Hannah Indigo
Assistant Maker Georgia Gaffney

PRODUCTION HISTORY

Newcastle 2021

Photo by JB Creative



TOUR READY

ARTFORM
Theatre

AUDIENCE
General, subscriber

LENGTH
150 mins, inc interval

CONTACT

Aaron Beach
aaron@belvoir.com

FOR MORE
belvoir.com.au

Cursed!

BELVOIR

ABOUT THE PROJECT

Darkly funny, irreverent, and a little bit shocking, *Cursed!* bursts onto the stage with a mad, consuming energy. Semi-autobiographical yet universally understood, playwright Kodie Bedford captures the frustrations and loving connection of a long-suffering family finding acceptance after a lifetime of trauma.

Bernadette hasn't been home to Geraldton for a while. Her siblings are mad as cut snakes, the oldies are worse – even a simple conversation ends up a cyclone of screaming. But Nan's leaving the world, and this mixed-up family returns to the roost; a brother living a big lie, a daughter swimming in little lies, and a mum who can't tell the truth to save herself. Are they cursed? Or can they change the way they see themselves, and how the world sees them?

ABOUT THE COMPANY

Belvoir is one of Australia's most distinguished and beloved theatre companies. New work and new stories sit at the centre of Belvoir's programing, alongside a mix of classics and international writing, and a lasting commitment to Indigenous stories. In short, Belvoir is about modern theatrically, an open society, and faith in humanity.

CREATIVE TEAM

Director Jason Klarwein
Performed by Valerie Bader, Chenoa Deemal, Sacha Horler, Bjorn Stewart, Alex Stylianou, Shirong Wu, Blazey Best
Set Designer Stephen Curtis
Costume Designer Chloe Greaves
Lighting Designer Chloe Ogilvie
Composer & Sound Designer Steve Francis
Assistant Director Dalara Williams
Assistant Costume Designer Keerthi Subramanyam
Associate Lighting Designer Veronique Benett
Movement/Fight Director Nigel Poulton
Stage Manager Natalie Moir
Assistant Stage Manager Brooke Verburg

PRODUCTION HISTORY

Sydney 2020

Photo by Daniel Boud



TOUR READY

ARTFORM
Theatre

AUDIENCE
Subscriber

LENGTH
90 mins

CONTACT

Carl Caulfield
carlcaulfield@hotmail.com

FOR MORE
carlcaulfieldstraydogs.com

Dali: Hallucinogenic Toreador

STRAY DOGS THEATRE

ABOUT THE PROJECT

Dali: Hallucinogenic Toreador uses the scandalous and surreal life of Salvador Dali to ask questions about art and fame. Outrageous, flamboyant and often on the edge of sanity, Dali considered himself a genius, but was this just a mask to hide his fear? The obsessions and neuroses that drove his art and life - grasshoppers, melting clocks, crutches, telephones and doubles, also expose his shameful secrets and raise disturbing questions about his legacy. As surreal and provocative as a Dali masterpiece, this new play for three actors is a wild, joyous and moving journey into Dali's strange and fascinating world.

ABOUT THE COMPANY

Stray Dogs Theatre Company was formed in Newcastle in 1995 by Carl Caulfield and Felicity Biggins, to help fill the void left by the demise of the Hunter Valley Theatre Company. We provide audiences with stimulating, entertaining, provocative theatre and we're dedicated to working with local theatre makers to achieve that goal.

CREATIVE TEAM

Writer Carl Caulfield
Director Dan Stoddart
Performers Carl Caulfield, Shane Brandon and Charlotte De Witt.
Lighting Designer/Multi-media Jacob Harwood
Sound Designer Simon Richie
Set Designer Geoff Overmeyer
Costume Designer Scissor Sisters
Hair and make-up Kimberlee Claire & Marion Giles
Producer Felicity Biggins

PRODUCTION HISTORY

Civic Playhouse, Newcastle 2019

Photo by Carl Caulfield



TOUR READY

ARTFORM
Physical performance, dance, street-styles

AUDIENCE
General

LENGTH
10 minute performance followed by 30 minute workshop

CONTACT

Mirabelle Wouters
mirabelle@branchnebula.com

FOR MORE
branchnebula.com

Demi-DEMO

BRANCH NEBULA

ABOUT THE PROJECT

demi-DEMO parachutes into your space with a team of champion skaters, BMXers, parkourists and dancers. With freakish skills and the danger level amped up, the speed of wheels vs. the vulnerability of bodies on foot, *demi-DEMO* is tightly choreographed within a compact set up of portable ramps. This highly mobile performance can be situated on any suitable surface. Audiences experience the artistry of a short 10min spectacular street-style performance and then have the opportunity to meet the artists and participate in a workshop with them. The *demi-DEMO* team leads techniques in skateboarding, BMX, parkour/freerunning, and dance. Ages 6+, beginners to intermediates.

ABOUT THE COMPANY

Since 1999, Branch Nebula's gritty street explosions have amazed audiences all over the world, from Brazil to Hong Kong, Finland to Chile, as well as 20 Australian skate venues. Branch Nebula is a multiple award winning company with a long track record of acclaimed sell out festival and regional shows.

CREATIVE TEAM

Co-creators Lee Wilson and Mirabelle Wouters
Composer Lucy Cliché
Production manager Alejandro Rolandi
Performers/Devisers Gonzalo Bellanti (flatland BMX)
Antek Marciniak (freerunner/parkourist)
Sari Simpson (skater)
Adam Haydec (skater)
Kathryn Puie (dancer/stilts)
Producer Jennifer Greer Holmes

PRODUCTION HISTORY

Sydney 2021

Photo by Mark Metcalfe



TOUR READY

ARTFORM
Theatre

AUDIENCE
General, 70+, history lovers

LENGTH
65 mins

CONTACT

Deborah Tobias
deborah@dtcmanagement.com.au

Dictionary By A Bitch: The Journals of Bea Miles

DEBORAH TOBIAS CREATIVE MANAGEMENT

ABOUT THE PROJECT

Dictionary By A Bitch draws its title from one of Bea Miles' extraordinary unpublished journals. It examines Bea's humorous, subversive, rebellious voice in calling out social injustices as expressed in those journals held in the State Library of NSW collection. The play explores the aspects of Bea's life which led to her becoming an iconic Sydney character. While known for being homeless, a fearless fare evader and reciting Shakespeare for money rather, there is more to Bea's story than people are generally aware of. We celebrate her life through stories, songs and imagery and is a slice of Sydney history.

ABOUT THE COMPANY

Initially an entertainment lawyer, I transitioned to creatives management and producing live events - principally music and theatre, including successful productions for the Adelaide Cabaret Festival, Sydney Festival, Sydney Opera House, Festival of Voices (Tasmania), Hayes Theatre, Casula Powerhouse, Wonderland Festival (Brisbane Powerhouse) and East Sydney Community Arts Centre

CREATIVE TEAM

Writer and performer Vashti Hughes
Director Liesel Baddorek
Sound and Audiovisual Designer
Ross Johnston
Lighting Designer Alex Torney
Producer Deborah Tobias

PRODUCTION HISTORY

Sydney 2021

Photo by Stuart Spence



TOUR READY

ARTFORM
Cabaret

AUDIENCE
Adults

LENGTH
60 mins

CONTACT

Eliane Morel
eliane.morel99@gmail.com

FOR MORE
elianemorel.com

Disenchanted: A Cabaret of Twisted Fairy Tales

ELIANE MOREL

ABOUT THE PROJECT

Why was the wolf in Grandmas bed? Are the Ugly Sisters feet really that big? How did Bluebeards wives die? How can a goose inspire a revolution? Find out what's really going on in Fairyland in Eliane Morel's and Daryl Wallis' *Disenchanted: A Cabaret of Twisted Fairy Tales*.

Set in a 1699 Parisian Salon hosted by the vivacious Madame d'Aulnoy this award-winning show (Best Show: Newcastle and Dubbo Fringes; Best 18+ Show: Young-Howze Theatre Awards) is a raunchy, operatic Into The Woods. Join the Fairy Tale Revolution immediately!

ABOUT THE COMPANY

Together we have created a brilliant, clever, topical and funny cabaret that re-tells well-known fairy tales to help audiences see the world in a different way.

CREATIVE TEAM

Writer and Performer Eliane Morel
Musical Director Daryl Wallis

PRODUCTION HISTORY

Extensive, including digital version

Photo by Andrew Worssam



TOUR READY

ARTFORM
Cabaret

AUDIENCE
Subscriber

LENGTH
60 mins

CONTACT

Steven Kramer
stevenkramermusic@gmail.com

FOR MORE
stevenkramer.com.au

Don't Make Me Play Piano Man

STEVEN KRAMER

ABOUT THE PROJECT

Don't Make Me Play Piano Man is a celebration of all the great piano hits and great piano players from across the ages. Well, most of them. Because cabaret performer Steven Kramer will happily play Elton John, Carole King or Peter Allen but please don't make him play THAT Billy Joel song.

With his cheeky, irreverent humour, we follow Stevens up and down relationship with the piano using all the tunes that audiences will know and love. Add in some original songs, heartfelt moments, a few unique instruments and a singalong, and this show is a sure crowd-pleaser.

ABOUT THE COMPANY

Steven Kramer is a musician, composer, producer and performer working across theatre, musicals and cabaret. With a strong belief in the power of humour, joy and storytelling to engage audiences, his work also encourages new Australian voices and writers.

CREATIVE TEAM

Writer and Performer
Steven Kramer

PRODUCTION HISTORY

Adelaide, Melbourne 2021

Photo by Chloe Snaith



TOUR READY

ARTFORM
Theatre

AUDIENCE
14+

LENGTH
70 mins

CONTACT

Katy Green Loughrey
katy@pyt.com.au

FOR MORE
pyt.com.au

Dorr-e Dari: A Poetic Crash Course in the Language of Love

PYT FAIRFIELD

ABOUT THE PROJECT

Dorr-e Dari: A Poetic Crash Course in the Language of Love is a rich and tender theatre work celebrating the ancient Persian art of poetry and romance in a contemporary Australian setting.

Three performers, Mahdi, Bibi and Jawad, all of Afghan background, charismatically guide the audience along a path to love, where we discover there is a poetic verse for every condition of the heart.

Audiences travel the vibrant streets of Kabul, Tehran, and Quetta, via Western Sydney, through intimate storytelling, joyous dancing, sumptuous video imagery and heavenly singing.

ABOUT THE COMPANY

PYT Fairfield is the only professional theatre company in Western Sydney focused on the development and engagement of local young and emerging artists as core practice. PYT has a reputation as a brave and transformative theatre company who make urgent work that explores the critical issues of our times.

CREATIVE TEAM

First Nations Elder Aunty Rhonda Dixon-Grovenor
Concept/ Co-Creator/ Performer Mahdi Mohammadi
Co-Creator/ Performer Jawad Yaqoubi
Co-Creator/ Performer Bibi Goul Mossavi
Director Paul Dwyer
Video Artist Sean Bacon
Lighting Designer Neil Simpson
Associate Dramaturg Bernadette Fam
Producer PYT Fairfield

PRODUCTION HISTORY

Sydney Festival 2021

Photo by Anna Kucera



IN DEVELOPMENT

ARTFORM
Cabaret

AUDIENCE
Family

LENGTH
55 mins

CONTACT

Kylie Harris
kylie@midnightfeast.com.au

FOR MORE
midnightfeast.com.au

Dunny Tunes

MIDNIGHT FEAST

ABOUT THE PROJECT

Written and performed by the Midnight Feast Ensemble, this is a cabaret like no other. Part physical theatre, part song cycle, part masterpiece, *Dunny Tunes* is about what happens when no-one is there to take your load.

When Robbie sets out to find a toilet, he discovers worlds upon worlds of hidden people, stuck in bathrooms across the world, seeking shelter, seeking love, and seeking to shit. Featuring original songs from the Midnight Feast cast and true stories taken from disabled toilets across Australia, this is a night you'll never be able to forget.

ABOUT THE COMPANY

Midnight Feast exists for the sole purpose of creating new opportunities for talented artists living with significant disabilities to train and work professionally. We create new original Australian stories for the stage and screen.

CREATIVE TEAM

Writers Midnight Feast
Writing Assistance Declan Coyle, Gabriel Francis, James Watson, Jordyn Fulcher, Matthew Bostock and Michael McStay
Dramaturgs Duncan Ragg and Marissa Bennett
Director Kylie Harris
Vocal Coach Rudolf Hendriks and Odile LeClezio
Movement Coach Nicholas Gell and Jordyn Fulcher
Singing Coach Frankie Bouchier
Performed by Midnight Feast

PRODUCTION HISTORY

N/A

Photo by Robbie Mockler



IN DEVELOPMENT

ARTFORM
Physical theatre

AUDIENCE
Adult

LENGTH
70 mins

CONTACT

Cecily Hardy
producer@legsonthewall.com.au

FOR MORE
legsonthewall.com.au

Eden

LEGS ON THE WALL

ABOUT THE PROJECT

Eden is a new Australian Gothic romp, with a stellar cast.

A beaten-up old farm truck becomes a make-shift emergency camp for a motley crew and represents possibly their only remaining chance of escape and survival - if they can get it going. A performance that can be staged on site or in theatre, it is rich with choreography and harnessed physicality as the truck itself becomes the central apparatus and rigging point, with performers utilising its every crevice. Nonverbal sequences, text, drag and song bring out their stories of loss, love and more. Small audiences are dropped into these four lives, thrust together, as natural disaster roars around them, creeping ever closer, their survival hanging in the balance.

ABOUT THE COMPANY

Legs on the Wall has a 35year story defined by daring, awe, and calculated risk. Their successes have made them Australia's most loved physical theatre company, crafting stories with Australia's best physical and non-physical artists. More than 700,000 people having experienced Legs work, appealing across barriers of language and socio-economic status.

CREATIVE TEAM

Created by Joshua Thomson and Dino Dimitriadis
Lighting Design Benjamin Brockman
Apparatus Design Joshua Thomson & David Jackson
Associate Producer Craig Bary
Performed by Iota and Paul Capsis, Debra Batton, Jack Williams and Ariadne Sgouros

PRODUCTION HISTORY

Sydney and Townsville 2021

Photo by Robert Cato



TOUR READY

ARTFORM
Dance

AUDIENCE
General

LENGTH
55 mins

CONTACT

Rhiannon Newton
rhiannonnewton@gmail.com

FOR MORE
rhiannonnewton.com

Explicit Contents

RHIANNON NEWTON

ABOUT THE PROJECT

Explicit Contents tells hyper-real stories about the contents of two bodies as they are made and remade by the forces of their surroundings. Burning and cooling, hungering and satiating, incorporating and expelling, the body becomes an explicit site of action and exchange. *Explicit Contents* is journey through the body's entanglement with the environment. Reimagining bodies as watery vessels, techno-chemical conglomerates and thermo-dynamic machines, it not only asks what impacts humans are having on their environment, but questions what these impacts feel like.

ABOUT THE COMPANY

Rhiannon is an Australian dancer and choreographer who grew up on Dunghutti land, regional NSW. Her creative work draws attention to ecofeminist ways of understanding interdependence between bodies and the world. Rhiannon currently works from Gadigal land where she contributes to community and culture through creation, performance, collaboration, teaching, research and producing.

CREATIVE TEAM

Choreographer Rhiannon Newton
Sound Designer Peter Lenaerts
Lighting Designer Karren Norris
Performed by David Huggins and Ivey Wawn

PRODUCTION HISTORY

Sydney Festival 2021

Photo by Lucy Parakhina



TOUR READY

ARTFORM
Dance

AUDIENCE
General

LENGTH
60 mins

CONTACT

Ryuichi Fujimura
ryuichi@bigpond.net.au

FOR MORE
ryuichifujimura.com

Fall! Falter!! Dance!!! + How I Practice My Religion

RYUICHI FUJIMURA

ABOUT THE PROJECT

My project is a solo double bill: *Fall! Falter!! Dance!!!* and *How I Practice My Religion*. They are both written, choreographed and performed by myself.

How I Practice My Religion, which was premiered in 2017, traces back my personal dance history and unpacks what is archived in my dancing body.

Fall! Falter!! Dance!!! is a humorous, poignant and sincere reflection on a contemporary dancers life, in which recognition is limited and the reward is small. Through this solo, self-devised performance work, I ask myself the fundamental question: why perform?

ABOUT THE COMPANY

Ryuichi Fujimura is an independent dance artist based in Sydney. Since the mid 1990s, he has studied contemporary dance technique as well as improvisation and choreography in Australia and overseas. Over the last fifteen years, Ryuichi has collaborated with both emerging and established artists in various dance, theatre, opera, site-specific performance and film projects.

CREATIVE TEAM

Writer, choreographer and performer Ryuichi Fujimura
Video artist Laura Turner

PRODUCTION HISTORY

Sydney 2021

Photo by Alex Houy



TOUR READY

ARTFORM
Dance, Theatre, Music

AUDIENCE
Family, elderly

LENGTH
30 mins

CONTACT

Diane Busuttil
info@creativecaring.com.au

FOR MORE
creativecaring.com.au/
post/fishy-tales-show

Fishy Tales

CREATIVE CARING

ABOUT THE PROJECT

Vashti Hughes and Diane Busuttil created *Fishy Tales*, a family-friendly performance about Italian Migrants who fished around the Iron Cove area in Lilyfield and Leichhardt.

Fishy Tales brings together local artists to celebrate the history of the Italian migrant community through pop-up performances. Focusing on their stories about protecting the environment and biodiversity of local waterways and fishing spots. *Fishy Tales* is a performance piece delivered in a piazza-style atmosphere that will impart knowledge regarding conversation to future generations. We dance the traditional tarantella with live musicians and invite audience members to join the celebration at the shows end.

ABOUT THE COMPANY

Creative Caring focuses on the lives of seniors and uses performance aspects; dance, theatre, and music to connect with communities. Storytelling and performance are ways in which we can access and share people's cultural history. We value art as a modality that connects people to stories and diverse cultures.

CREATIVE TEAM

Concept and direction by Vashti Hughes and Diane Busuttil
Performed by Diane Busuttil, Renata Comisso, Vashti Hughes (Joe) and Ryuichi Fujimura
Musicians Trevor Brown, Phillippe Wittwer and Alf Sconomiglio
Set Banners Jennifer Reid
Costumes Aspasia Leonarder
Producer Creative Caring

PRODUCTION HISTORY

Sydney 2021

Photo by Shane Rozario



TOUR READY

ARTFORM
Theatre

AUDIENCE
Subscriber

LENGTH
80 mins

CONTACT

Felicity Burke
ooh-gusto@hotmail.com

FOR MORE
flightpaththeatre.org

Fitson and Dan

FELICITY BURKE

ABOUT THE PROJECT

Miss Fitson is an independent, free thinking teacher, communist and iconoclast. Dan is a larrikin, editor & bookie's mate, plunged into war. Together they try to make a future.

Fitson and Dan is a fusion of the work of two writers. Kate O'Brien, a little known Australian writer wrote a beautiful monologue - *Our Miss Fitson* - about a sensitive intelligent woman reflecting on her life in Sydney in the pre and post war eras. Whilst this was a stand-alone piece the references to her love Dan and how she lost him to war were tantalising. Mark O'Flynn, writer and Miles Franklin Award finalist created the story of Dan as a companion piece. The two pieces could be skilfully merged by Felicity Burke into one full length play. The poetic quality of the script and richness of the love story has emerged with distinctly Australian humour and great depths of sadness that lead to a shattering end. War looms, can love survive?

ABOUT THE COMPANY

The company of creatives has come together especially to make this work.

CREATIVE TEAM

Writers Kate O'Brien, Mark O'Flynn
Editor and Director Felicity Burke
Performed by Janine Penfold

PRODUCTION HISTORY

Blue Mountains 2021

Photo by Felicity Burke



TOUR READY

ARTFORM
Dance, music

AUDIENCE
General, subscriber

LENGTH
60 mins

CONTACT

Annalouise Paul
annalouise@annalouisepaul.com.au

FOR MORE
annalouisepaul.com

Flamenco For Everybody

ANNALUISE PAUL DANCE THEATRE

ABOUT THE PROJECT

Poetry, percussion, Swiss hang, contemporary-Flamenco dance and jazz flamenco guitar come together in this visually theatrical and highly virtuosic show. *Flamenco For Everybody* was created as a way of bringing communities together to celebrate the spirit of dance. See and hear some of the best flamenco artists in the country, with; flamenco veteran Robbie Varga on guitar; virtuoso Byron Mark on contemporary percussion, Rafael Leon (Cordoba) with authentic cante, poetry and lyrics and contemporary-flamenco dancer, Annalouise Paul. Flamenco is contemporary culture. Interfaith and art seamlessly shift inside ancient songs. It is these frictions and paradoxes that give Flamenco its power.

ABOUT THE COMPANY

Annalouise Paul is an award-winning choreographer and performer whose work explores ideas about identity and transformation through the intersection of traditional and contemporary cultures. Her career spans three decades collaborating on intercultural projects in UK, USA and Asia. In 2021, APDT won two industry arts awards for inaugural international touring and community engagement in India.

CREATIVE TEAM

Dancer and Director
Annalouise Paul
Flamenco Singer Rafael Alcolea
Flamenco guitar Robert Varga
Percussion Byron Mark
Tour Manager Future Shock
Producer Annalouise Paul Dance Theatre

PRODUCTION HISTORY

Extensive

Photo by Shane Rozario



TOUR READY

ARTFORM
Theatre

AUDIENCE
General

LENGTH
60 mins

CONTACT

Jenna Mathie
jenna@norpa.org.au

FOR MORE
norpa.org.au

Flow

NORPA

ABOUT THE PROJECT

Told through contemporary dance, poetry, visual imagery and rap, *Flow* is a new dreaming, strengthening respect for Eldership and engaging young people in the living traditions held in local ancestral stories.

Flow is a yarn about Yaegl country and neighbouring nations, within NSW. It's a tale of searching and finding identity in music, urban culture and nature, an ancient story acknowledging how and why water flows through this region and its cultural significance.

We are developing community engagement activities to be offered alongside presentation of *Flow*, including weaving and youth workshops.

ABOUT THE COMPANY

Based in Lismore, NORPA is a company that makes theatre from the ground up. We take inspiration from the country and culture around us. We program and co-produce shows by leading national companies too, but creating original Australian work is at the heart of what we do and why we exist.

CREATIVE TEAM

Writer/Performer Mitch King
Composer/Performer Blake Rhodes
Director/Choreographer
Jade Dewi Tyas Tunggal
Lead Designer Mic Gruchy
Lighting Design Karl Johnson
Writing support Kirk Page & Damion Hunter
Videography Maiara Skarheim
Producer Letila Mitchell

Yaegl Elders and Emerging Leaders
Gilbert Laurie, Ron Heron, Lenore Parker, William Walker, Ken Laurie, Shondell Laurie, Frances Belle Parker, Elsdon Charlton

PRODUCTION HISTORY

Lismore 2021

Photo by Tree Faerie



IN DEVELOPMENT

ARTFORM
Dance theatre

AUDIENCE
12+ years

LENGTH
90 mins

CONTACT

Liz Terracini
liz@sprung.org.au

FOR MORE
sprung.org.au

French Café

SPRUNG!! DANCE THEATRE INC

ABOUT THE PROJECT

French Café explores the age-old joy of song and dance, the mysteries of communication in a world full of culture collisions, and the fact that beyond the irrelevancies of age, sex/gender, language (or not!) and ability/disability, we are all the same, full of foibles, and finding joy in unexpected places. Our Sprung!! performers and three guest artists vie for audience attention and gradually reveal the rich complexities of their characters and relationships. The audience is immersed in the parade of life: a celebration of human foibles in a café where no-one speaks the same language and absurd is the order of the day.

ABOUT THE COMPANY

Sprung!! is a non-profit disability arts organisation committed to creating new works that explore themes from the lives of our dancers with disability, inspire mainstream audiences breaking down social barriers and promoting a more inclusive society. We provide community dance workshops and training for talented committed dancers with disability.

CREATIVE TEAM

Artistic Director Michael Hennessy
Co Director Kate McDowell
Set designer Joey Ruigrok
Guest artists Asher Bowen-Saunders / Ché Pritchard
Dancers Alice Misty Boscheinen, Tallula Bourne, Sinead Skorka Brennan, Tara Coughlan, Max McAuley, Zac Mifsud, Kane Shields & Freya Toussaint

PRODUCTION HISTORY

N/A

Photo by Kate Holmes



IN DEVELOPMENT

ARTFORM
Theatre

AUDIENCE
General

LENGTH
90 mins

CONTACT

Sally Sussman
ssussman@ihug.com.au

FOR MORE
australianperformanceexchange.com

Game of I-Lands

AUSTRALIAN PERFORMANCE EXCHANGE

ABOUT THE PROJECT

Game of I-Lands is an interactive performance about the impact of the South China Sea conflict on the creatures that live there. *Game of I-Lands* involves the audience in a live board game as they compete for fish and resources on behalf of the countries surrounding the South China Sea. When extreme weather inhibits play and undersea life respond, the audience must form new allegiances and engage in collaborative modes of play to survive.

Game of I-Lands taps into Game culture to encourage young and old to play out possible scenarios to real world issues via collaboration and negotiation.

ABOUT THE COMPANY

Australian Performance Exchange (APE), incorporated in 2007, creates and produces inter-cultural performing arts projects involving collaborations between artists from Indigenous & non-Indigenous Australia, multi-cultural Australia and the rest of the world. APE creates new Australian theatre work, which responds to current and historic concerns of cultural identity, diversity and social justice.

CREATIVE TEAM

Director Sally Sussman
Designer Annemaree Dalziel
Performed by Katia Molino and Valerie Berry
Scientists Cat Dorey
Creative Producer Pippa Bailey

PRODUCTION HISTORY

N/A

Photo by Annemarie Dalziel



TOUR READY

ARTFORM
Dance theatre

AUDIENCE
General

LENGTH
70 mins

CONTACT

Emma Corrick
emma@performinglines.org.au

FOR MORE
performinglines.org.au/
projects/glass-child

Glass Child

THE FARM AND PERFORMING LINES

ABOUT THE PROJECT

Glass Child is a poignantly revealing depiction of the sibling relationship between Kayah, a young man with Down Syndrome and his sister Maitreyah. Expressed through dance, theatre and storytelling *Glass Child* highlights their connection and how their lives have been affected by other people's perceptions.

The term 'Glass Child' refers to the sibling of someone with special needs who often becomes a facilitator in the family, someone who is "looked through". Kayah is Maitreyah's oldest brother & was born with Down Syndrome. Throughout their lives Maitreyah has watched him be left out, ridiculed or ignored without understanding why. *Glass Child* puts a microscope on their love and how their relationship has grown. It questions how the rest of us behave when we find the difference we inevitably look for. It asks us to examine why we search for difference when we share so much in common.

ABOUT THE COMPANY

Run by artists, driven by art, The Farm are collaborative artists fascinated with the fragility and strength of the human condition and driven by a desire to make contemporary dance relevant to the lives of ordinary Australians.

Performing Lines produces provocative contemporary performances by Australia's most audacious independent artists.

CREATIVE TEAM

Created by Kayah and Maitreyah Guenther, Kate Harman and Gavin Webber

Performers Kayah and Maitreyah Guenther

Co-Directors by Kate Harman and Gavin Webber

Set and Costume Designer
Rozina Suliman

Lighting Designer Chloe Ogilvie

Composer and Sound Designer
Anna Whitaker

Producer The Farm and Performing Lines
With special thanks to Suzie Miller for her script mentorship and consultation

PRODUCTION HISTORY

Gold Coast 2021

Photo by Jorge Serra



TOUR READY

ARTFORM
Theatre

AUDIENCE
Female and Non Binary people
aged 18 - 50 years

LENGTH
70 mins

CONTACT

Jenna Suffern
thegeneralpublictc@gmail.com

FOR MORE
thegeneralpublictc@gmail.com

Hot Mess

THE GENERAL PUBLIC

ABOUT THE PROJECT

Set inside a public bathroom, *Hot Mess* reveals the secrets and scandals that happen behind closed doors. The show cracks open the cubicle to allow audiences to witness the clash of the public and the private, the collision of friends and strangers, and gets you to take a long, hard drunken look in the mirror.

Hot Mess is just about to finish a sold out season at Kings Cross Theatre in Sydney, and has been praised for the joyous, relatable and just bloody funny material, while centring female and queer experiences.

ABOUT THE COMPANY

The General Public have built a cult following with their fast-paced and outrageous comedy shows that centre female and queer experiences. They have a knack for finding the jokes and the joys in the mundane and every day.

CREATIVE TEAM

Director Tasha OBrien

Performed by Courtney Ammenhauser, Hannah Grace Fulton, Jenna Suffern, Alicia Dulnuan-Demou, Mai Tran and Jessica Aidie

Stage Manager Steph Black
Sound Designer Chrysoulla Markoulli

Lighting Designer

Vanessa Gregoriou

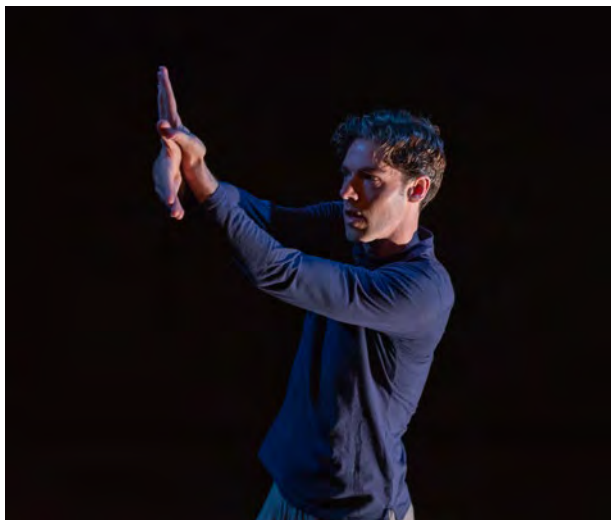
Set Artist Hayley OMara

Producers Courtney Ammenhauser, Hannah Grace Fulton and Jenna Suffern

PRODUCTION HISTORY

Sydney 2021

Photo by Clare Hawley



TOUR READY

ARTFORM
Physical theatre

AUDIENCE
General

LENGTH
60 mins

CONTACT

Christopher Samuel Carroll
info@barewitness theatre.com

FOR MORE
barewitness theatre.com

Icarus

BARE WITNESS THEATRE COMPANY

ABOUT THE PROJECT

Icarus is a solo physical theatre show about a stowaways epic journey, hidden in the landing gear of a plane, before falling to his death in an unassuming London suburb. Combining Chaplin-esque virtuosity with an intricate, evocative soundscape, the myth of the dreamer who flies too close to the sun is reimagined as a modern tale of courage, hope, desperation and despair, brought to life with unexpected playfulness.

ABOUT THE COMPANY

We make raw, pulsating theatre that ignites the imagination. We are an actor-led ensemble based in Canberra, producing original plays and bold reimaginings of classical texts in a stripped-back, highly-physical style. Our work builds from the vitality and virtuosity of the actor, drawing from our training at Ecole Jacques Lecoq, Paris.

CREATIVE TEAM

Creator/Performer
Christopher Samuel Carroll
Sound Designer Kimmo Vennonen
Lighting Designer Gillian Schwab

PRODUCTION HISTORY

Perth, Canberra 2019

Photo by Novel Photographic



TOUR READY

ARTFORM
Theatre

AUDIENCE
Family, schools

LENGTH
70 mins

CONTACT

Jenna Mathie
jenna@norpa.org.au

FOR MORE
norpa.org.au

Into the Forest

NORPA

ABOUT THE PROJECT

Follow Alice, and her carer Kate into the forest on a journey that explores their friendship, the myth and reality of the Australian bush, love, lost children, fairy tales and fire.

Alice and Kate are separated, a fire is started, and Alice is lured into the underworld by the Devil Dingo. Eventually missing home and her loved ones, a self-determined Alice escapes the Dingo. Meanwhile, a fire has ripped through the forest, leaving devastation and a distressed Kate in its wake. It's Australian gothic meets European fairy-tale, in a story of love, the power of nature and magic. With a sound score performed live on stage by Alexandra Spence, *Into the Forest* is a mixture of storytelling, theatre, movement and visual design.

ABOUT THE COMPANY

Based in Lismore, NORPA is a company that makes theatre from the ground up. We take inspiration from the country and culture around us. We program and co-produce shows by leading national companies too, but creating original Australian work is at the heart of what we do and why we exist.

CREATIVE TEAM

Writer/Performer/Devisor
Kate McDowell
Director/Devisor Julian Louis
Assistant Director Kathy Cates
Performer/Devisor Alice Misty
Boscheinen
Sound Designer Alexandra Spence
Movement Consultant
Kimberley McIntyre
Designer Charlotte Haywood
Assistant Designer Taya Solomon

PRODUCTION HISTORY

Lismore, and in-school tour, 2021

Photo by Vanessa Kellas



TOUR READY

ARTFORM
Theatre

AUDIENCE
Subscriber

LENGTH
70 mins

CONTACT

Alison Bennett
alisonbennett16@gmail.com

FOR MORE
hurrahhurrah.net

Introducing Aunty Jude

HURRAH HURRAH

ABOUT THE PROJECT

Aunty Jude is on a journey from heartbreak to doing 'whatever the hell she wants' as she smashes down other people's expectations in an outrageous midlife debutante ball. A mix of clown, cabaret and the grotesque.

Introducing Aunty Jude is an interactive performance which explores the commodification of relationships and the unseen middle age particularly for women. It is cabaret in style and has one performer and one musician on stage. It has elements of clowning, bouffon, audience interaction and music.

ABOUT THE COMPANY

Hurrah Hurrah is a company dedicated to creating original live and screen projects. HH is focused on the use of comedy to explore the human condition with a highly visual and physical aesthetic. HH is interested in the grotesque, the excentrique and exploring themes that are common to all humanity.

CREATIVE TEAM

Producer, Writer, Performer
Alison Bennett
Director Shy Magsalin
Composer/Musician
Maria Alfonsine
Lighting Designer Lucia Haddad

PRODUCTION HISTORY

Sydney 2021

Photo by Jasmin Simmons



IN DEVELOPMENT

ARTFORM
Theatre

AUDIENCE
8 – 12 year olds, families

LENGTH
60 mins

CONTACT

Vanessa Wright
vanessa@redlineproductions.com.au

FOR MORE
redlineproductions.com.au

JUST

RED LINE PRODUCTIONS

ABOUT THE PROJECT

JUST (tricking, annoying, stupid, crazy, disgusting, shocking, doomed) LIVE ON STAGE is Red Line Productions' first stage adaptation for children.

Adapted by Robin Goldsworthy from the infamous JUST series by Australians Andy Griffiths (author) and Terry Denton (illustrator), the production is definitely not for the faint farts - or hearted!... and is a love letter to the power of the imagination, determination and friendship.

ABOUT THE COMPANY

Since its inception in 2014, Red Line Productions has established itself as one of Australia's leading independent theatre presenters. We've presented over 20 exclusively commissioned new Australian works, including the World Premieres of new works by revered contemporary playwrights Louis Nowra, Toby Schmitz, Steve Rogers and more. As custodians of Sydney's legendary and wildly intimate Old Fitz Theatre, we've presented over 117 productions in 6 years, with Australian premieres of international works, brand new Australian works and landmark revivals.

CREATIVE TEAM

Writer Robin Goldsworthy
Director Blazey Best
Production Designer James Browne
Sound Designer & Composition
Nate Edmondson
Lighting Designer Veronique Benett
Magic Consultant Harry Milas
Production Manager and Company Stage Manager Rebecca Poulter
Producers Lenore Robertson, Andrew Henry, Vanessa Wright
Performers Jack Angwin, Kelly Monisse & Sam Bowden

PRODUCTION HISTORY

N/A

Illustration by Terry Denton



TOUR READY

ARTFORM
Dance, theatre, digital

AUDIENCE
Dance & online audiences, discreet community engagement

LENGTH
45 mins

CONTACT

David Clarkson
david@stalker.com.au

FOR MORE
boxofbirds.net

Layer

STALKER THEATRE / BOX OF BIRDS

ABOUT THE PROJECT

Layer is both a work in development and a working methodology, allowing for engagement by discrete artistic communities separated by distance. Layer was first performed simultaneously in real time in both Sydney (ESCAC) and in the Netherlands at the Grand Theatre in Groningen. Layer dances the story of three women, each alone and isolated with multiple cultural identities. Indigenous/ non-indigenous/ Australian/ European. Since making the working we have had four communities interested in utilising our working methodology to unite artists working in different locations: NAISDA in Gosford, Wiradjuri Study Centre in Condobolin (NSW), Guadalajara Cultural Centre (Mexico) and Spelman College in Atlanta. This interest has made us realise that we can share our working methodologies with the wider arts community, including festivals and presenters.

ABOUT THE COMPANY

Stalker Theatre and its digital branch Box of Birds are a long standing and well respected multidisciplinary theatre company based in Sydney, Australia. We make high quality physical and visual productions that range from small, mobile street theatre productions to large site-specific outdoor work and both intimate and large-scale indoor works.

CREATIVE TEAM

Australian Director and Producer
David Clarkson

Netherlands Director (ShELFISH Productions) Veerle van Overloop

Dramaturg Margie Breen

Movement Consultant Aku Kadogo

Composer Peter Kennard

Digital artists and VFX
Matt Hughes, Boris Bagattini

Photogrammetry Trevor Coates

Print Graphics Danielle Bluff

Production Manager Billy Cheeseman

Live Streaming Liz Astey and dplr
Netherlands Digital (WERC Collective)
Liz Astey and dplr, Joachim Rulmke and Jelle Valk

Initial Digital Unreal Design
Andrew Bluff

Digital Consultant Andrew Johnston

Performed by Cloe Fournier, Katina Olsen, Olympia Kotopoulos

PRODUCTION HISTORY

Sydney 2020
Photo by David Clarkson



TOUR READY

ARTFORM
Multidisciplinary physical/theatre

AUDIENCE
16+ years

LENGTH
60 mins

CONTACT

MILKE
laura@milke.com.au

FOR MORE
stepsandholestheatre.com

Le Voyage

STEPS & HOLES AND MILKE

ABOUT THE PROJECT

Le Voyage is the heart warming story of a blue-nosed clown who goes on a voyage through the harsh landscapes of her mind. It charts the journey of a young woman in the throes of a powerful grief, as she grapples with the loss of a loved one. Created by Jo Turner and Kate Walder, the work combines delicate clowning, superb visual imagery, puppetry, aerial and stunning original music from Aria award-winning composer Shenzo Gregorio. In a world where words cannot suffice, the story appeals directly to the emotions, bringing us closer together to stare at the randomness of life.

ABOUT THE COMPANY

Steps and Holes is an award-winning multi-disciplinary theatre company specialising in physical and visual story-telling. We explore universal themes through the poetry of movement, bold design, clown, puppetry and music. The spirit of clown is embedded in our ethos and style; a form that promotes humility, champions a sense of the ridiculous and transcends demographics by revealing our shared humanity. Steps and Holes aims to take extraordinary new works of physical theatre across the country and to the world.

CREATIVE TEAM

Created by Kate Walder and Jo Turner

Director Jo Turner

Performer Kate Walder

Original Composition
Shenzo Gregorio

Sound Design Tegan Nicholls

Lighting Design Benjamin Brockman

Initiating Design Sabina Myers

Design Consultant Stephanie Howe

Producer MILKE (Laura Milke Garner)

PRODUCTION HISTORY

Sydney 2018

Photo by Jasmin Simmons



TOUR READY

ARTFORM
Music

AUDIENCE
Family

LENGTH
80 mins

CONTACT

Fiona Joy Hawkins & Rebecca Daniel
pianofiona@gmail.com

FOR MORE
fionajoy.com

Lightness of Dark

LITTLE HARTLEY MUSIC

ABOUT THE PROJECT

There is a crack in everything, that's how the light gets in. *Lightness of Dark* is an ethereal and collaborative journey into the depths of loss, mourning and recovery. We all experience loss at some time in our lives, loss of health, friendship, a pet, lost youth or the loss of a loved one. When real life becomes art, experiences can be shared, learned from and resonate with others in similar situations. This concert invites the listener to find the beauty in the sadness and move forward in a positive way.

ABOUT THE COMPANY

Neo-classical piano, violin and voice, exploring the beauty in music that speaks about loss. Added humour and lightness makes this concert suitable and applicable to everyone.

CREATIVE TEAM

Piano and Voice Fiona Joy Hawkins
Violin and Voice Rebecca Daniel

PRODUCTION HISTORY

Extensive

Photo by littlehartleymusic



TOUR READY

ARTFORM
Dance theatre

AUDIENCE
Women, dance lovers, fans of Kubrick films

LENGTH
50 mins

CONTACT

Bonnie Curtis
info@bonniecortisprojects.com

FOR MORE
bonniecortisprojects.com

Limits

BONNIE CURTIS PROJECTS

ABOUT THE PROJECT

Limits is a solo dance theatre performance created by an emerging choreographer from the Wollondilly region. The work delves into identity, societal expectations and examines limitations, stereotypes and experiences as a female living with disability. It shares the story of a grotesque creature navigating the world through the lens of a stereotypical "hot-body". Trying to live up to the expectations of the world around her, riddled with insecurity and self-hate. Sabotaged by her limitations.

ABOUT THE COMPANY

We're an award-winning, internationally touring company who creates live, interactive performances. We do this using a unique blend of dance, theatre, comedy and performance arts to explore darker elements of our human existence. We tackle tough topics that encourage audiences to question their views on humanity and modern society.

CREATIVE TEAM

Artistic Director Bonnie Curtis
Choreographer and Performer Bonnie Curtis
Mentor Kay Armstrong
Sound Design Fiona Lloyd Harding
Dramaturgy Nell Ranney
Lighting Design Lucia Haddad
Assistant to Artistic Director Steph Wyburn

PRODUCTION HISTORY

Sydney 2021

Photo by David Bonnell



TOUR READY

ARTFORM
Cabaret

AUDIENCE
Adult, women

LENGTH
90 mins

CONTACT

Janet Swain
hellotheloveys@theloveysmusic.com

FOR MORE
theloveysmusic.com

Loveys Actually

THE LOVEYS MUSIC

ABOUT THE PROJECT

The Loveys - Jenny, Janet, Pam and Belinda - are excited to announce the launch of their new album, *Loveys Actually* - fifteen sparkling and original songs in a stage show. Inspired by the Heroine's Journey, *Loveys Actually* is full of songs and wry stories that women and men understand, connect with, and actually care about - the very stuff of everyday life - from divorce, dementia, septuagenarian sex to the ordinary and courageous business of love itself. *The Loveys* are really hitting their stride now, after 6 years of developing their style in the creative hamlet of Mullumbimby in Northern NSW. Great musicians, songwriters and performers, The Loveys demand to be heard as they create a music genre that is both new and as old as time - heroic women, rocking out and telling it like it is.

ABOUT THE COMPANY

The Loveys are four women who write songs and tell stories. Heralding from the creative hamlet of Mullumbimby in Northern NSW, The Loveys have been developing their style for the past 6 years, as they create a new genre in music - heroic women who tell it like it is.

CREATIVE TEAM

Director Brin Pritchard.
Performed by Jenny Parenteau,
Janet Swain, Belinda Eadsforth,
Pamela Freeman

PRODUCTION HISTORY

Ocean Shores 2021

Photo by Brian Usher



TOUR READY

ARTFORM
Dance theatre

AUDIENCE
15+ years

LENGTH
55 mins

CONTACT

Cloe Fournier
contact@cloefournier.com

FOR MORE
cloefprojects.com

Mea Culpa

CLOE [F] PROJECTS

ABOUT THE PROJECT

Women stomp feet and hiss in quest of salvation, freedom and self-liberation taking the viewer on a journey of sensuous and absorbing visual dance-theatre. *Mea Culpa* is a conceptual provocation where the female form owns your space and your gaze. Drawing from the trope of science-fiction, *Mea Culpa* is delivered through a series of images containing a sophisticated combination of intriguing movement, punchy words, electric sounds and breathtaking lighting. Surrealistic dramas played out from a micro-society of female bodies who bear the pressures from an ever-present (in)visible power referred to as IT. IT's mission is to standardise their image, mechanise their plasticity and regulate their movement and behavioural patterns. But this trans-human female community decide to defy the system by re-coding their shaping.

ABOUT THE COMPANY

CloeFournier / Cloe [F] Projects creates dance-theatre works that do not shy away from being gutsy, raw and provocative. We aspire to risk taking, to honest productions that are relevant to the NOW, connecting people together through fraught subject matters.

CREATIVE TEAM

Choreographer & Director & Designer Cloe Fournier
Dramaturg Vicki Van Hout
Composer James Brown
Production Manager & Lighting Designer Frankie Clarke

PRODUCTION HISTORY

Parramatta 2019

Photo by Alex Apt



Mountain

STALKER THEATRE & BOX OF BIRDS

ABOUT THE PROJECT

Mountain is Stalkers 25-minute production designed for outdoor festivals and family events. *Mountain* has been the headline entertainment for Glow, Horizon and Real Festivals in Australia.

Mountain has wowed the crowds with its innovative, physical and visual delight. The performance combines aerial theatre with cutting edge interactive performance technology. The four performers meld acrobatics, dance and aerials to create a captivating spectacle. *Mountain* also features a projected 3D play space for young and old alike. Directly following the 25-minute performance, kids and adults are invited to rediscover the environment and wildlife.

ABOUT THE COMPANY

Stalker Theatre and its digital branch Box of Birds are a long standing and well respected multidisciplinary theatre company based in Sydney, Australia. We make high quality physical and visual productions that range from small, mobile street theatre productions to large site-specific outdoor work and both intimate and large-scale indoor works.

TOUR READY

ARTFORM
Theatre, dance, aerial, visual

AUDIENCE
General

LENGTH
25 mins performance; 30 mins play

CONTACT

David Clarkson
david@boxofbirds.net

FOR MORE
boxofbirds.net



Mrityu

ARJUNAN PUEVENDRAN AND PERFORMING LINES

ABOUT THE PROJECT

The project is centred on how we come to terms with 'mrityu', the Sanskrit word for death (and a cognate of the Latin word 'mort'). The work draws on discomfort in grappling with funerals 'especially the fear of losing loved ones' juxtaposed with the philosophy of the soul seeking detachment from the body. It explores the paradox of death: a moment of tragedy, whilst also a pathway to release from earthly suffering. *Mrityu* seeks to weave the rituals, philosophies, emotions and words underpinning funerals I had attended together with personal reflections into a performative work.

ABOUT THE COMPANY

My work focuses on the intersection of music, dance, rhythm and dialogue. It is rooted in Carnatic music and Bharata Natyam traditions of South India, as contextualised in contemporary Australian society. It involves largely singing and percussion, woven with dance theatre and storytelling.

IN DEVELOPMENT

ARTFORM
Dance, music, spoken word

AUDIENCE
15+ years

LENGTH
60 mins

CONTACT

Alice Hatton
alice@performinglines.org.au

FOR MORE
performinglines.org.au/
artists/arjunan-puveendran/

CREATIVE TEAM

Performed by Arjunan Puveendran
Choreographer Amrita Hepi
Dramaturgs Victoria Spence and Jiva Parthipan
Producer Alice Hatton (Performing Lines)

PRODUCTION HISTORY

N/A

Photo by Stephen Mifsud



TOUR READY

ARTFORM
Dance

AUDIENCE
Subscriber, young adult

LENGTH
50 mins

CONTACT

Anton
quikant@yahoo.com.au

FOR MORE
antonprojects.com

NARCIFIXION

ANTON PROJECTS

ABOUT THE PROJECT

Led by high profile performers Anton and Brianna Kell, *NARCIFIXION* is a dark and humorous work about narcissism. This pertinent, expansive contemporary dance theatre duet examines identity in the digital age. Inspired by narcissistic behaviour epidemically prevalent across the screen space, *NARCIFIXION* explores two single characters, who are in a constant state of exhibiting and observing themselves. Tapped, scanned and swiped, this enticingly strange world is jam packed with riotous dance. Set in tune to the deep synth vibes of Jai Pyne and illuminated by Steve Hendy, the dance of *NARCIFIXION* is dense, superficial, super serious and profoundly absurd.

ABOUT THE COMPANY

I am an Australian, independent dance artist and dance educator who creates, develops and produces accessible contemporary dance theatre work and quality workshop community engagement experiences for predominately Australian audiences.

CREATIVE TEAM

Director/Choreographer/Performer
Anton

Choreographer/Performer
Brianna Kell

Composer Jai Pyne

Lighting Designer Steve Hendy

Costume Designer
Brooke Cooper-Scott

Rehearsal Assistant/Workshop Leader Alana Everett

Education Consultant Shane Carroll

Producer Anton

PRODUCTION HISTORY

Sydney 2021

Photo by Jhunoy-Boy Borja



IN DEVELOPMENT

ARTFORM
Dance theatre

AUDIENCE
Contemporary Performance and comedy lovers

LENGTH
70 mins

CONTACT

Emma McManus
emma.l.mcmanus@gmail.com

FOR MORE
performinglines.org.au/
artists/too-rude/

Nature Is Healing

TOO RUDE AND PERFORMING LINES

ABOUT THE PROJECT

Nature is Healing is a new performance work about the relationships between human and non-human animals sharing urban environments, based on the story of the gweela/Australian bush turkey. In *Nature is Healing*, the hero is the gweela and its fight against gentrification in urban areas, particularly North Sydney. The gweela were hunted to near extinction in the early 20th Century and now are back with a vengeance! The work also unpacks the eponymous meme that has emerged during the COVID-19 pandemic, based on a misguided idea of the environment returning to a more natural state as humans self-isolate.

ABOUT THE COMPANY

Too Rude is a collaboration born from artists Emma McManus' and Maria White's participation in the infamous Earlwood Farm Christmas Climate Change Variety Hour and named after the Daily Telegraph's response to this event. They make hilarious, researched and political performances about themes such as living in cities, cultural policy, and ecologies.

CREATIVE TEAM

Co-creator and Performer
Emma McManus

Co-creator and Performer
Maria White

Sound Design Gus McGrath

Gweela Expert Dr. Darryl Jones

PRODUCTION HISTORY

N/A

Photo by Bryony Jackson



TOUR READY

ARTFORM
Cabaret

AUDIENCE
Female

LENGTH
60 mins

CONTACT

Robbi James
producer@companyrogues.com

FOR MORE
rogueprojects.com.au

Not Today

ROGUE PROJECTS

ABOUT THE PROJECT

An intimate cabaret experience, *Not Today* is a frank, funny, and emotion-charged song cycle about a queer young woman trying to make the most of her life, while she can. Featuring an entirely original score, Ally takes audiences on a bumpy ride through life as a not-so-famous 26-year-old. The song cycle features twelve of Ally's smart, fun, and insightful pieces, including the titular *Not Today*, following her story as she comes to terms with adulting, climate anxiety, and her own mortality. It's a heartfelt and sometimes hilariously sarcastic journey into the hopes and dreams of a millennial-in-progress.

ABOUT THE COMPANY

Rogue Projects is an award-winning Sydney-based independent arts producer. We believe in championing invisible artists, nurturing great talent by holding the door open for artists without opportunity, and we seek stories that are not on our stages, fostering relationships with writers and directors to realise outstanding new Australian work.

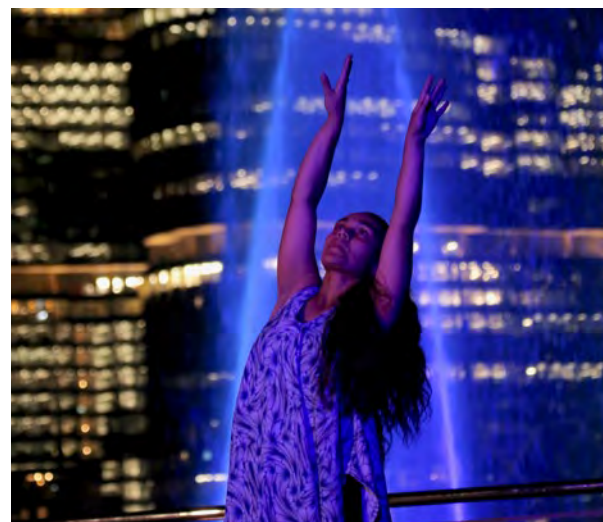
CREATIVE TEAM

Written and performed by Ally Morgan with Jack Angwin, Hannah Gwatkin and Brendan Paul
Director Miranda Middleton
Producer Robbi James
Production Design Angus Konsti
Lighting Design Lucia Haddad
Sound Design Zachary Saric
Promo Photography Jasmin Simmons
Production Images Parker Floris

PRODUCTION HISTORY

Sydney 2021

Photo by Jasmine Simmons



TOUR READY

ARTFORM
Dance

AUDIENCE
Family

LENGTH
5 mins extended (customised with local content)

CONTACT

Dean Tuttle
dean@creativeproducer.com.au

FOR MORE
deanoworld.com.au

Ocean Spirit Rising

DTCP

ABOUT THE PROJECT

A dancer. A dancing water fountain. In harmony. *Ocean Spirit Rising* brings a contemporary Indigenous dancer together with an animated water fountain in a dance that represents humans living in harmony with our water environments. Using the languages of dance and visual spectacle, it is captivating and accessible. Duration can be customised and extended to include local cultural content. Setting is outdoor with a stage against a water backdrop. (Perfect in a post-COVID world).

ABOUT THE COMPANY

Our work is driven by the desire to bring theatre to meet mainstream Australia in unusual places to find new audiences.

CREATIVE TEAM

Director Dean Tuttle
Dancer and choreographer Janaya Lamb
Indigenous choreography Alfred Taahi
Fontaineer Glenn Turner

PRODUCTION HISTORY

Sydney 2021

Photo by Bryan Moses



TOUR READY

ARTFORM
Dance theatre

AUDIENCE
General

LENGTH
60 mins

CONTACT

Liz Terracini
liz@sprung.org.au

FOR MORE
sprung.org.au

Oh, How I Dreamt Of Things Impossible

SPRUNG!! DANCE THEATRE INC

ABOUT THE PROJECT

Produced in association with NORPA, *Oh, How I Dreamt Of Things Impossible* is a visually captivating and moving journey into the minds and dreams of seven diverse movement artists, dancers with disabilities, who think outside the box. Through the lens of 7 young, imaginative and curious minds, we rediscover the power of dreams. Dreams that summon the optimism and strength to overcome the doubts we all share about life. Western Sydney artist, Andrew Christie created the projections that form the backdrop and at times envelop the dancers, acting as virtual choreographed counterparts reflecting a world as imagined by the dancers.

ABOUT THE COMPANY

Sprung!! is a non-profit disability arts organisation committed to creating new works that explore themes from the lives of our dancers with disability, inspire mainstream audiences breaking down social barriers and promoting a more inclusive society. We provide community dance workshops and training for talented committed dancers with disability.

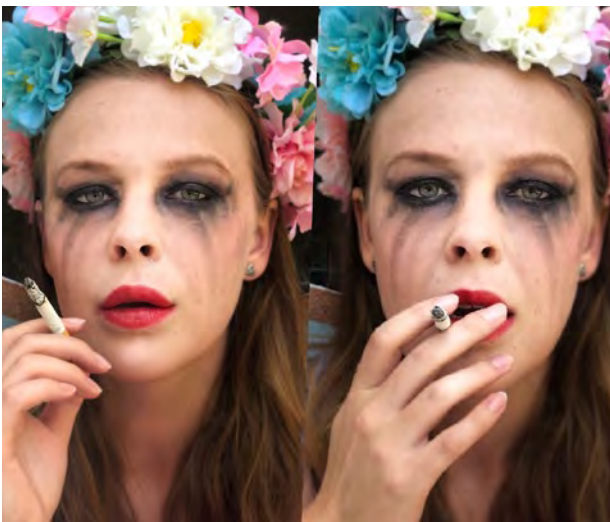
CREATIVE TEAM

Artistic Director Michael Hennessy
Digital Projection Design/Sound design Andrew Christie
Lighting Design John Rayment
Costume Design Jennifer Irwin
Composer Fred Cole
Dramaturg Julian Louis
Dancers Alice Misty Boscheinen, Tallula Bourne, Sinead Skorka Brennan, Tara Coughlan, Max McAuley, Zac Mifsud & Kane Shields

PRODUCTION HISTORY

Lismore 2019

Photo by Kate Holmes



TOUR READY

ARTFORM
Theatre

AUDIENCE
Adult

LENGTH
60 mins

CONTACT

Lucy Heffernan
lucy.heffernan@bigpond.com

FOR MORE
merrigong.com.au/merrigongx

Party Girl

LUCY HEFFERNAN

ABOUT THE PROJECT

Party Girl is a unique solo performance written and created by Lucy Heffernan. It combines live original music, stand-up comedy and theatrical monologue into one hour of adults only entertainment.

Like a pub gig with narrative, *Party Girl* tells the story of Fairy Sprinkles, a character who works as a fairy at kids parties. Based on true stories both hilarious and heartbreaking, *Party Girl* challenges notions of traditional feminine behaviour, and explores the impact of mental illness on family. A story about love and faith, *Party Girl* is an intimate, funny, and deeply moving work that speaks (and sings) directly to the audience.

ABOUT THE COMPANY

Lucy Heffernan is an independent artist who mashes music, theatre and storytelling together to make contemporary performance. Weaving her practice as a singer songwriter with her work as a theatre maker, Lucy endeavours to create fiercely feminist, wickedly funny, and deeply moving performance that speaks directly to the audience.

CREATIVE TEAM

Creator/Performer Lucy Heffernan
Director/Dramaturg Tim Maddock
Lighting Designer/ Production Manager Tyler FitzPatrick

PRODUCTION HISTORY

Woollongong, Newcastle 2019

Photo by Jay Gardener



TOUR READY

ARTFORM
Theatre, dance, comedy

AUDIENCE
Family

LENGTH
80 mins

CONTACT

Neale Whittaker
admin@phlycrew.com.au

FOR MORE
phlycrew.com.au

Phly Crew Live

PHLY CREW

ABOUT THE PROJECT

A colourful blend of sketch comedy and dance! Australia's Got Talent grand finalists, Phly Crew, take you through a catacomb of hilarious themes and scenes in our newest production *Phly Crew Live*. Described as a fusion of high performance Dance and comedy, *Phly Crew Live* creates giggles and gasps from anyone aged 5 - 105. It offers a variety of content so wide that some sketches and routines will divide a room in thinking 'I absolutely loved that!' or 'What did I just watch?' A truly unique experience for the whole family.

ABOUT THE COMPANY

Phly Crew is a truly unique group of very creative individuals. We've been making people giggle and gasp for over 10 years. Phly Crew has been described as humorous, innovative entertainment. Compared to Monty Python or the Umbilical brothers...but Dance! a combination of sketch comedy and high level dancing/choreography. Phly Crew as a company strives to push the envelope of creativity and what a "Dance" company can look like and achieve.

CREATIVE TEAM

Co-director/Manager/Dancer
Neale Whittaker
**Co-director/Creative director/
Dancer** James Barry
Promotions/Dancer
Aimee Whittaker
Workshop/Dancer Hannah Stewart

PRODUCTION HISTORY

Sydney, Canberra, Port Macquarie
2021

Photo by Leo Bonne



TOUR READY

ARTFORM
Dance theatre

AUDIENCE
General

LENGTH
55 mins

CONTACT

Liz Lea
lea_dance@yahoo.co.uk

FOR MORE
leadance.com

RED

LIZ LEA DANCE

ABOUT THE PROJECT

RED is fearless, *RED* is fierce, *RED* is powerful. *RED* is fraught and is broken, and is still running. Hitch a ride on a race with time that speaks in another tongue. The language of body, movement, words and film. *RED* is an elusive, fractious and fabulous interdisciplinary performance. Bringing on the bawdy and banishing the banal. *RED* challenges laughter, relief and tenacity.

ABOUT THE COMPANY

Liz Lea is a performer, choreographer and producer based in Australia. Her work has been commissioned in India, UK, Australia, South Africa, Singapore and USA. Liz was the 2017 ACT Artist of the Year and won a 2017 Australian Dance Award for her direction of Great Sport!

CREATIVE TEAM

Choreographers Vicki van Hout, Virginia Ferris, Martin del Amo
Dramaturg/Mentor Brian Lucas
Composer of original score
Alexander Hunter
Cinematographer Nino Tamburri
Film Editor Arianna Bosi
Script writers Liz Lea, Brian Lucas, Victoria Lea
Lighting Designer Karen Norris
Rehearsal Director and dramaturgy
Natalie Ayton
Technical Manager Craig Dear
Stage Manager Anni Doyle
Wawrzynczak
Costumes designed by Liz Lea, Brian Lucas, Bruce Scott and Brooke Giles
Costume Consultant Cate Clelland

PRODUCTION HISTORY

Extensive

Photo by Lorna Sim



TOUR READY

ARTFORM
Theatre, clowning

AUDIENCE
Family

LENGTH
60 mins

CONTACT

Alison Bennett
alisonbennett16@gmail.com

FOR MORE
hurrahhurrah.net

Roomba Nation

HURRAH HURRAH

ABOUT THE PROJECT

Roomba Nation explores the theme of technology and how we are responsible for the ethical development of technology and civilization for future generations. The narrative follows the character of Pippie who arrives in an experimental treatment centre in an invented country. She is in the final stages of an unnamed terminal disease. The show follows the journey of Pippie, Nursie and Doc and uses clowning to investigate the ridiculous treatments she undergoes in her human desire to cling to hope. Doc is determined to push the technological limits as far as they can possibly go, Nursie is concerned with the care vs treatment question and Pippie is left to connect with the audience through facing the one thing that none of us can escape. The show uses clowning and comedy to pose some very delicate questions to the audience and ends in a whirl of empathy and pathos as the trio are forced to face their real fears.

ABOUT THE COMPANY

Hurrah Hurrah creates new works of live performance which use comedy and physicality to explore the human condition and the themes which bind us all together. We focus on finding pathos and meaning through joy and the exploration of everyday strangeness.

CREATIVE TEAM

Concept, Director Alison Bennett
Set and Costume Designer Maurice
Performed by Alison Bennett, Kate Walder and Nick O'Regan

PRODUCTION HISTORY

Sydney 2021

Photo by Steven Gustav Reinhardt



TOUR READY

ARTFORM
Dance and film (hybrid onsite + online)

AUDIENCE
General

LENGTH
180-240 mins

CONTACT

Laura Osweiler
amara@amaradances.com

FOR MORE
amaradances.com

Shifting Lines/Shifted

DR LAURA (AMARA) OSWEILER

ABOUT THE PROJECT

Shifting Lines/Shifted is a gallery-style inclusive event including live intercultural dance, dance films and interactive dance exhibits designed for audiences onsite and online to have comparable experiences. Performance includes simultaneous events: live dance with audio descriptions short-formatted looping dance films with audio descriptions interactive dance exhibits: space, lights and audio and film guides for audiences to explore concepts audio guide for entire event streaming online and direct engagement with home-located audiences This is a solo work presenting new forms of embodiment that I developed to manage disabilities by deepening relationships with health, dance and performance. It obscures and transforms the materiality of a human form through lights, shadows and fabric.

ABOUT THE COMPANY

Dr Laura (Amara) Osweiler an independent dancer, choreographer, director and producer with 25+ years as a Middle Eastern and Intercultural performer working in the USA and Australia. Current works interweave dance, movement, film, music and health and employ communication technologies to support access needs and engage with audiences in different locations.

CREATIVE TEAM

Dancer, Choreographer, Videography, Staging, Audio Description Laura Osweiler
Lighting & Staging Designer Paul Osborne
Composer Cassie To
Videography Lux Eterna
Audio Description Support Sarah Houbolt

PRODUCTION HISTORY

Lismore 2021

Photo by Le Vieux Loup



TOUR READY

ARTFORM
Theatre

AUDIENCE
General, subscriber

LENGTH
60 mins

CONTACT

Melissa Cannon
melissa.cannon@penrith.city

FOR MORE
deborahpollard.com/videos

Slow Burn

Q THEATRE

ABOUT THE PROJECT

Every year more and more people experience the impacts of bushfire devastation. This is the story of one such family who lost their home during the 2003 Canberra bushfires. Eighteen years on they still remember, they can't forget, but they can carry on. With wry wit, compelling storytelling and song, Deborah Pollard conjures into being a theatrical portrait of the very human face of climate change catastrophe.

CREATIVE TEAM

Creator and performer
Deborah Pollard
Outside Eye Chris Ryan

PRODUCTION HISTORY

Penrith 2021

ABOUT THE COMPANY

Q Theatre has been making work for more than 50 years. Based at The Joan, Penrith we offer audiences a chance to see theatre that has been provoked, inspired or exploded out of our local context. We build pathways for established and early career artists to train, experiment and create.

Photo by Martin Fox



TOUR READY

ARTFORM
Music theatre

AUDIENCE
General

LENGTH
120 mins, inc interval

CONTACT

Matthew Charleston
mjcharleston@yahoo.com.au

FOR MORE
sonsofsun.com.au

Sons of Sun - Elvis, Jerry Lee, Johnny and Me

TYPE FASTER PRODUCTIONS

ABOUT THE PROJECT

Told through the character of its founder Sam Phillips, his assistant Marion Keisker, and the famous musicians that Sam recorded, Sons of Sun features a three piece live band fronted by John Kennedy, performing thirty-five songs from Elvis, Johnny Cash, Carl Perkins, Jerry Lee Lewis, Roy Orbison and many more. Sydney musician John Kennedy, of Love Gone Wrong fame began developing the Sons of Sun idea in 2011 with the release of his Sons of Sun Vol 1 CD. playwright Kieran Carroll has written an accompanying script to Kennedys beautiful renditions, seamlessly blending the narrative and songs to produce a compelling, original and heartbreaking blend of rock n roll theatre.

CREATIVE TEAM

Writer Kieran Carroll
Director Louise Fischer
Performed by Matthew Charleston,
Ben MacLaine and Victoria Beck
Music by John Kennedy,
Murray Cook and Paul Scott

PRODUCTION HISTORY

Extensive

ABOUT THE COMPANY

Type Faster Productions showcases the plays of award winning playwright, Kieran Carroll. Originally directed by Neil Gooding and now directed by Louise Fischer, the six member all NSW cast have begun performing Sons of Sun under the Type Faster banner since early 2021.

Photo by Dusk Devi Vision



TOUR READY

ARTFORM
Dance theatre

AUDIENCE
12+ years

LENGTH
90 mins

CONTACT

Jenny Ellis
jenny@littlewingpuppets.com

FOR MORE
littlewingpuppets.com

Spike

LITTLE WING PUPPETS

ABOUT THE PROJECT

Spike is the story of an egg stolen by a greedy rat. A young girl finds it. She is playing alone because she is being bullied by other children. The baby echidna that hatches has no spikes yet and she doesn't know what kind of creature he is. She tries to help but accidentally puts him in dangerous situations - in the nest of a crocodile, an emu and a turtle. Will they both discover their 'spikes' and find a way stand up to their bullies? Come on a lively journey through the world of shadow puppetry to find out.

ABOUT THE COMPANY

Little Wing Puppets is based in NSW and we make great children's theatre. Since 2006, we have presented hundreds of shows and workshops in every state and territory of Australia, as well as overseas. Our work has grown from a love of puppetry, inspiring children and the power of a good story.

CREATIVE TEAM

Writer Jenny Ellis and Anne Brooksbank
Director Jacob Williams and Clare Batholomew
Composer Mal Webb
Design consultants Richard Bradshaw and Fabrizio Montecchi
Puppets, Sets and Lights Jenny Ellis, Jeremy Lavender, Lauren Redpath, Freya Pitt and Nick Wollan
Designer Jenny Ellis
Sound Designer/Performer Jenny Ellis

PRODUCTION HISTORY

Parramatta 2021

Photo by Jeremy Lavender



TOUR READY

ARTFORM
Cabaret

AUDIENCE
Adults, LGBTQIA+

LENGTH
45 minutes

CONTACT

Jude Bowler
jude@judebowler.com

FOR MORE
judebowler.com

Stage Fright ein Kabarett

JUDE BOWLER ENTERTAINMENT

ABOUT THE PROJECT

Character comedienne, Jude Bowler's enticing and touchingly twisted, droll homage to Marlene [Dietrich]. Nobody's muse, everybody's icon. A modern-day Dietrich - bored and mad as ever. Ten songs performed in Two Acts, combining Dietrich originals with Lou Reed, Iggy Pop, Grace Jones, Blondie, Bowie, Prince, Rod Stewart and Aretha Franklin, referencing gender, sexuality, longevity, equality and connection, as lived and loved via late 20th century gay culture and its icons. Glamour that knows grime, and a good time. It's fun and familiar, even if you weren't there.

ABOUT THE COMPANY

Independent Performer/Writer/Producer/Creative Collaborator, originally from Sydney, based in Central West NSW. Creating theatre, cabaret, vaudeville; working big cities and small towns to entertain, amuse and inform.

CREATIVE TEAM

Performer, Writer, Producer Jude Bowler
Creative Consultant Drew Fairley
Production Consultant Bill Hopper

PRODUCTION HISTORY

Gulgong, Sydney 2021

Photo by Kate Freestone



TOUR READY

ARTFORM

Theatre

AUDIENCE

Family, 8–13 years

LENGTH

70 mins

CONTACT

Lisa Freshwater
lisa@fem.net.au

FOR MORE

fem.net.au

Thai-riffic!

FEM PRESENTS

ABOUT THE PROJECT

Thai-riffic! is adapted for the stage from Oliver Phommavanhs best selling novel for young people - is a culturally diverse, contemporary coming of age story about a young Thai Australian boy straddling two cultures and using humour to explore identity, family and belonging.

Alongside comedy the production incorporates shadow puppetry, physical theatre and cutting edge integrated media featuring the original graphic animations from the book, speaking to its 8-13 year old demographic and their families.

ABOUT THE COMPANY

FEM Presents believes in the power of representation. Creating social and cultural change through events, productions and workshops. Highlights include *BUTCH* at the Sydney Town Hall, *How to be a Good Trans Ally* for Sydney Opera House and touring Cassie Workman's Helpmann Award nominated *Giantess*.

CREATIVE TEAM

Writer Nathan Luff
Director Lisa Freshwater
Designer Mark Thompson
Lighting Designer Martin Kinnane
Sound Designer Nate Edmondson
AV Designer Mic Gruchy
Illustrator Evi O

PRODUCTION HISTORY

Sydney 2017

Photo by Heidrun Lohr



TOUR READY

ARTFORM

Children's theatre

AUDIENCE

Family

LENGTH

50 mins

CONTACT

Laura Dawson
hello@thebeanies.com.au

FOR MORE

thebeanies.com.au

The Beanies EGG-straordinary Day

THE BEANIES MUSIC PTY LTD

ABOUT THE PROJECT

The Beanies EGG-straordinary Day! examines the challenge of babysitting an egg from a child's perspective ultimately resulting in a realisation that parenting is a task of extreme difficulty. The Beanies explore parenting styles from numerous angles and influences including cultural and religious differences, dietary choices, playing styles and safety measures in a fun and humorous way, showing children that all families and parenting styles are valuable and the power of creative problem solving as a team.

ABOUT THE COMPANY

The Beanies are a musical adventure for little ones with big imaginations. They were nominated for an ARIA award and signed their music to ABCKids. Laura, Mim and Michael tour original live shows, but they are best known for their award-winning podcast series, which has a million little ears listening!

CREATIVE TEAM

Script Writers Miriam Rizvi, Michael Yore & Laura Dawson
Production Designer Miriam Rizvi, Michael Yore & Laura Dawson
Lighting Designer Kathryn Thomas
Composer/Sound Designer James Court
Producer Kym Halpint

PRODUCTION HISTORY

Extensive

Photo by Jay La



TOUR READY

ARTFORM
Theatre, music

AUDIENCE
Family

LENGTH
60 mins

CONTACT

Chris Bendall
Chris@criticalstages.com.au

FOR MORE
criticalstages.com.au

The Box Show

JUNKYARD BEATS AND CRITICAL STAGES TOURING

ABOUT THE PROJECT

Ordinary household items are transformed into extraordinary musical instruments and unwanted junk comes alive in exciting and surprising ways! The contents of an abandoned kitchen and wheelie bins become the greatest drum set in the world; plastic bags are an amazing musical instrument and the human body becomes a unique sound machine. With a language of gibberish and rhythm, this show is accessible to any age and nationality. You won't look at a cardboard box the same way after watching this show!

ABOUT THE COMPANY

In the hands of Junkyard Beats, ordinary household items are transformed into musical instruments that create a booty shaking, toe-tapping, electric atmosphere that makes you want to get up and move. Junkyard Beats has played throughout Australia from Sydney to Perth and also deliver fun, creative workshops for children and adults.

CREATIVE TEAM

Writers Oded Prior and Nigel Turner-Carroll
Director Nigel Turner-Carroll
Composer Oded Prior
Musical Director Oded Prior
Choreographer Oded Prior
Performers Oded Prior, Leslie Marsh, Marina Da-Silva, Braeden Lee, Georgia Anderson and Theo Fontes

PRODUCTION HISTORY

Extensive

Photo by Daniel Carter



TOUR READY

ARTFORM
Circus, physical theatre

AUDIENCE
Family

LENGTH
20, 30 or 60 minutes

CONTACT

Zebastian Hunter
ad@circusmonoxide.com.au

FOR MORE
circusmonoxide.com.au

The Construct

PRECARIOUS INC /AS CIRCUS MONOXIDE

ABOUT THE PROJECT

The Construct is a contemporary circus show on a new sculptural apparatus. This work expresses the uncertainty of reality and the impermanence of our imagined structures, the struggles we experienced through Covid and the human ability to confront and overcome adversity. As a physical metaphor for this constructed reality we have built a 3.3m x 3.3m cube from welded steel. This structure is specifically engineered to bear human weight and fitted with pivoting wheels to enable ease of movement. Cross bars interlace through the structure allowing the performers to weave, flip, dance and contort in an intricate and innovative choreography.

ABOUT THE COMPANY

Circus Monoxide is a circus company based in Wollongong. Founded in 1996, the organisation is a recreational school, social circus provider and touring professional company. Artistic Director, Zebastian Hunter is creating a new portfolio of shows through our project company axis productions, in partnership with Producer Linda Catalano's, Quiet RIOT.

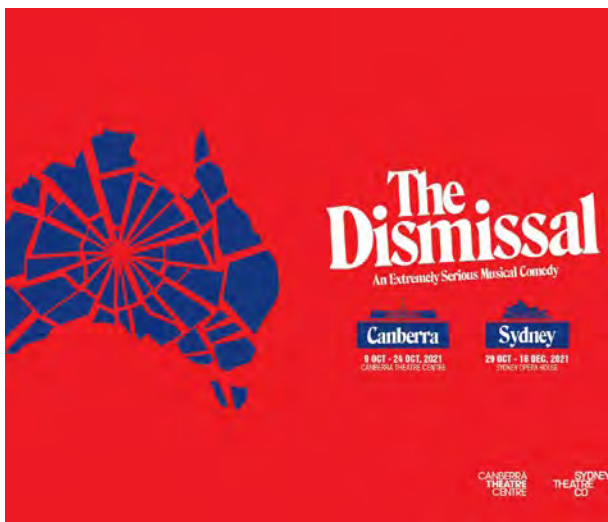
CREATIVE TEAM

Director Zebastian Hunter
Creative Producer Linda Catalano
Composer Judith Stubbs
Costume Designer Elia Bosshard
Lighting Design Morgan Moroney
Apparatus Design Zebastian Hunter with Thomas Creative

PRODUCTION HISTORY

Darling Harbour 2021

Photo by Philip Erbacher



IN DEVELOPMENT

ARTFORM
Music theatre

AUDIENCE
Subscriber

LENGTH
120 mins, inc interval

CONTACT

Victoria Wilde
victoria@squabbalagic.com

FOR MORE
thedismissal.com

The Dismissal: An Extremely Serious Musical Comedy

SQUABBALAGIC WITH SYDNEY THEATRE COMPANY AND CANBERRA THEATRE CENTRE

ABOUT THE PROJECT

Canberra, 11 November 1975. As Gough Whitlam delivers his iconic speech, a crowd of reporters throngs the steps of Parliament House. Chief amongst them, Norman Gunston. Fast forward to 2021 and the Gold Logie winner and Wollongong's favourite son returns to narrate a rollicking, razor-sharp account of Australia's great constitutional crisis. Fans of political satire will revel in this all singing, all dancing, all mud-slinging retelling of Canberra's most controversial moment.

CREATIVE TEAM

Book Blake Erickson and Jay James-Moody
Music and lyrics Laura Murphy
Conceived and directed Jay James-Moody
Music Director Steven Kramer
Choreographer Chiara Assetta
Designer Charles Davis
Lighting Designer James Wallis

PRODUCTION HISTORY

N/A

ABOUT THE COMPANY

Squabbalagic is one of Sydney's longest running independent producers of music theatre. Under the leadership of Jay James-Moody the company has gained a reputation as producers of high-quality, award-winning, boutique productions, featuring some of Australia's leading music theatre practitioners.

Photo by Kenney Ogilvie



IN DEVELOPMENT

ARTFORM
Theatre

AUDIENCE
General

LENGTH
55 mins

CONTACT

Kate Gaul
kate.jane.gaul@gmail.com

FOR MORE
sirentheatreco.com/
the-end-of-winter

The End of Winter

SIREN THEATRE CO AND CRITICAL STAGES TOURING

ABOUT THE PROJECT

What's happening to winter? In hot, bushfire-prone Australia our winters are becoming warmer and shorter. Will climate change eventually erase the season, leaving it to exist only in paintings, fairytales and historical accounts? *The End of Winter* is about loss and resilience. It's about the places the writer goes in search of the cold weather she loves—places she can reach via public transport and the imagination.

This is the story of our vanishing seasons. It's about losing things we didn't know were ours to lose

CREATIVE TEAM

Writer Noëlle Janaczewska
Director and Producer Kate Gaul
Composer & Sound Designer Nate Edmondson
Production Designer Camille Ostrowsky
Lighting Designer Beccy Russell
Performer Jane Phegan

PRODUCTION HISTORY

N/A

ABOUT THE COMPANY

Siren Theatre Co is an independent professional theatre company based in Sydney. Since 1997 the company has commissioned and produced new Australian plays, classics, made plays for young people and families, partnered with producing and presenting organisations to give our vital audiences bold imaginative experiences. Siren is always evolving but these things hold true: the work would look ridiculous in other mediums; always tell a good story; keep the actor at the centre of the work; don't add to the crap in the world; the work will be beautiful, rigorous, imaginative and timely.

Photo by THP Stock



IN DEVELOPMENT

ARTFORM
Cabaret

AUDIENCE
Music lovers, Women, Croatian and Eastern European community

LENGTH
80 mins

CONTACT

Josipa Draisma
emailthehenhouse@gmail.com

FOR MORE
inwildcompany.com

The Hen House

JOSIPA DAISMA & PYT FAIRFIELD

ABOUT THE PROJECT

The Hen House is inspired by the extraordinary, humorous and tragic true stories of female migrant factory workers, including the life of Bernarda Papic, late grandmother of sisters and key artists Josipa and Mara who worked at Ingham's Chicken Factory in Western Sydney from 1967-1998. *The Hen House* is a dynamic contemporary music theatre work weaving multi-lingual stories of life as a female factory worker with distinctly live and loud original rock music - a nod to 1970s Australian pub-rock bands. Traditionally, spaces like factories and rock-bands were stereotypically men-only arenas, but with Australia's need for migrant women to fill factory jobs and second-wave feminists pushing for equality, women demonstrated how they could successfully reclaim and occupy these spaces as their own.

ABOUT THE COMPANY

Josipa is an award-winning interdisciplinary performing artist and cultural leader working across theatre, music, cabaret and comedy. Her original work has been programmed across national comedy and arts festivals in Australia. Her practice is informed by culture, music, identity, place, family and her cultural lineage.

CREATIVE TEAM

Co-creator/Performer
Josipa Draisma
Co-creator/Performer
Mara Knezevic
Director Anthea Williams
Musical Director Zeljko Papic
Choreographer Emma Saunders
Dramaturg/Writing Facilitator
Sime Knezevic

PRODUCTION HISTORY

Fairfield 2020

Photo by Anna Kucera



TOUR READY

ARTFORM
Theatre

AUDIENCE
General

LENGTH
3 parts, 3 hours

CONTACT

Chris Bendall
chris@criticalstages.com.au

FOR MORE
criticalstages.com.au

The Illiad – Out Loud

CRITICAL STAGES TOURING

ABOUT THE PROJECT

The Illiad is the first great story in the Western tradition – a monument to the glory and futility of war – telling the story of 40 days in the 10th and final year of the Trojan War. At its heart, it follows a single theme, the fury of Achilles, who is immobilised by pride and honour and never lifts a weapon for 20 of the 24 books. This adaptation brings the story back to its original oral tradition when it was spoken (sung) over 15 hours. William Zappa studied 17 translations of the original text to create an experience that unifies orator and audience in this extraordinary theatrical experience. Four actors, live percussion and oud, and your community, are about to embark on an epic adventure together.

ABOUT THE COMPANY

Critical Stages Touring is Australia's national touring theatre company discovering and developing outstanding independent theatre for audiences everywhere. We create live performing arts experiences that can travel, connecting these with diverse regional communities, and fostering a sustainable and diverse national independent theatre sector.

CREATIVE TEAM

Director and Writer William Zappa
Assistant to the Director
Lindy Hume
Percussion Michael Askill
Oud Hamed Sadeghi
Set and Costume Design Mel Liertz
Sound Design Steven Coyle
Lighting Design Matt Cox
Adaptation Mentor and Editor
Emeritus Professor Elizabeth Minchin FAHA
Associate Producer and Stage Manager Farlie Goodwin

PRODUCTION HISTORY

Sydney, Adelaide, Barragga Bay
2019-2021

Photo by Lisa Tomasetti



TOUR READY

ARTFORM
Theatre

AUDIENCE
Subscriber

LENGTH
90 mins

CONTACT

Camilla Turnbull
camilla.emilie.turnbull@gmail.com

FOR MORE
kingsxtheatre.com/linden-solution

The Linden Solution

RATCATCH THEATRE

ABOUT THE PROJECT

Part TED-talk, part confession, *The Linden Solution* is a reality-blurring theatre that examines politics, propaganda and extremism in contemporary Australia. Four performers unravel the story of Linden Victoria, a town stagnant with millennial apathy, boomer corruption, poverty and drought. Aided by clever audio visual design, the play follows a civil servant, who decides to make Linden great again by implementing a series of neo-fascist policies in local government. Tensions escalate and consequences mount as the quiet Australians of Linden take all-too-easily to a sanitised form of hatred.

ABOUT THE COMPANY

Ratcatch develops, produces and stages new works that seek to engage with issues relevant to contemporary Australia. Through a highly collaborative approach, we aim to delight, surprise and provoke audiences with ground breaking theatre experiences.

CREATIVE TEAM

Writer Alexander Lee-Rekers
Director Camilla Turnbull,
Production Design Tess Burg,
Composer Chrysoulla Markoulli
Video Design Cameron Smith

PRODUCTION HISTORY

Sydney 2021

Photo by Clare Hawley



TOUR READY

ARTFORM
Dance

AUDIENCE
General

LENGTH
80 mins

CONTACT

Lisa Maris McDonell
marismaris@yahoo.com

FOR MORE
propermotion.dance/works/the-20-commissions-project

The Lobster

PROPER MOTION

ABOUT THE PROJECT

The Lobster is the performance arm of Lisa Maris McDonell's \$20 Commissions Project. The project asks 'What is a choreographer worth?' 'What does \$20 worth of a choreographer's time look like?' How does \$20 worth of a choreographer's time translate to choreographic material? To answer these questions Lisa has invited choreographers from around the world to create a dance work worth \$20 on her — a 50yo mother of three from Wollongong. Featuring works by choreographers as prominent as Crystal Pite to a current third year student from the Northern School of Contemporary Dance in Leeds and much in between, *The Lobster* weaves the commissions in with storytelling, video projection and \$20 soundbites provided by professional musicians from the South Coast of NSW to create a work that is at once humorous, educational and provocative.

ABOUT THE COMPANY

Proper Motion are based on the South Coast of NSW. We aim to make world class work from a regional centre, giving audiences and communities from the South Coast of NSW (and beyond) the opportunity to witness, experience and engage with contemporary dance making and performance. Under the directorship of Lisa Maris McDonell, whose experience and interests span choreography, performance, works for screen, therapeutic arts and Flamenco, Proper Motion aims to continue working across various modes of presentation and creation.

CREATIVE TEAM

Director/Performer
Lisa Maris McDonell
International cohort
See website for full details

PRODUCTION HISTORY

Extensive

Photo by Lisa Maris McDonell



The Point

LIZ LEA PRODUCTIONS

ABOUT THE PROJECT

The Point has been developed around connections between people and cultures. Touring this work means this message and the artists involved can connect further than Canberra - the piece has been created in a stunning installation of light by Award Winning lighting designer Karen Norris and speaks to the power of human movement and cultural collaboration. Arising out of the Covid lockdown we have a large scale company work that has the power to connect with audiences far and wide.

ABOUT THE COMPANY

Liz Lea Dance Company has a 20 year history of creating stunning, ground breaking dance work that draws from the power and beauty of classical Indian dance. The Point team includes leading Australian exponents of Bharata Natyam, Kuchipudi and Kathak, alongside leading contemporary dancers from the ACT, NSW, VIC and New Zealand.

Photo by Andrew Sikorski

TOUR READY

ARTFORM
Dance

AUDIENCE
Family

LENGTH
60 mins

CONTACT

Liz Lea
lea_dance@yahoo.co.uk

FOR MORE
sonsofsun.com.au

CREATIVE TEAM

Director Liz Lea
Movement devised by the company.
Classical works choreographed by Mavin Khoo, Ira Patkar, Nandana Chellappah and Divyusha Polepalli.
Contemporary Dancer David Huggins, Nicholas Jachno, Billy Keohavong, Eliza Sanders, Jareen Wee, Bharata Natyam Dancers Reshika Sivakumaran, Soumya Sudarshan, Shweta Venkataraman, Dhivya Vignesa, Katha Dancer Ira Patkar, Kuchipudi Dancer Vanaja Dasika, Suhasini Sumithra
Lighting Designer Karen Norris
Composers Liberty Kerr, DJBC, Taikoz, Malhar Jam, Malhar Jamâ by Harish Sivaramakrishna
Technical Director Roni Wilkinson
Technical Manager Craig Dear
Costumes concepts Liz Lea, Suzanne Wisner, Boronia Halstead
Costume Consultant Cate Clelland

PRODUCTION HISTORY

Canberra 2021



The Screwtape Letters

CLOCK AND SPIEL PRODUCTIONS

ABOUT THE PROJECT

The Screwtape Letters follows the correspondence between a senior demon, Screwtape, and his nephew, a junior tempter named Wormwood, whose task it is to secure the damnation of a young man known as The Patient. This is an engaging account of temptation and triumph over it. One of his most popular and celebrated works of C.S. Lewis, this theatrical adaptation is brilliantly physical and funny. Through his satiric use of the demonic narrative persona, Lewis examines the opposing sides in the battle between good and evil.

ABOUT THE COMPANY

We produce and pioneer new and existing works that inspire life, bring hope and prompt audiences to consider questions with regard to culture, faith and humanity. We want to champion, stage, develop and invest in dramatic works that explore and celebrate life. We nurture both artists and audiences in the process and product.

TOUR READY

ARTFORM
Theatre

AUDIENCE
Subscriber

LENGTH
80 mins

CONTACT

Hailey McQueen and Yannick Lawry
info@clockandspielproductions.com

FOR MORE
clockandspielproductions.com

CREATIVE TEAM

Adaptation and Director Hailey McQueen
Production Design Isabella Andronos
Lighting Designer Christopher Page
Composition and Sound Design Adam Jones
Production and Stage Management Jessica Gray
Performed by Yannick Lawry and George Zhao
Producers Hailey McQueen and Yannick Lawry

PRODUCTION HISTORY

Adelaide 2017
Sydney, Melbourne, Canberra 2016

Photo by John Leung



TOUR READY

ARTFORM
Music

AUDIENCE
General, subscriber

LENGTH
130 mins, inc interval

CONTACT

Melissa Cannon
msmelissacannon@gmail.com

FOR MORE
spookymen.com

The Spooky Men's Chorale

THE SPOOKY MEN'S CHORALE

ABOUT THE PROJECT

The Spooky Men's Chorale is a vast, rumbling, steam-powered and black-clad behemoth, seemingly accidentally capable of rendering audiences moist eyed with mute appreciation or haplessly gurgling with merriment.

Through Georgian table songs, pin-drop beautiful ballads, highly inappropriate covers, and immaculate man anthems like "Don't stand between a man and his tool", the Spooky Men contemplate the absurdity and grandeur of the modern male armed only with their voices, a sly collection of hat, and a twinkle in the eye. It is ideally not so much comedic as hilarious, not so much shimmering perfect as pleasingly and deeply human.

ABOUT THE COMPANY

Men singing songs. Some of them are funny. Through an evening of drop deadpan beautiful mansinging, the Spooky Men's Chorale ponder the conundrums of modern life and manhood, invite the audience to joyously experience a wall of mansound, laugh stupidly, and venture into areas of great tenderness.

CREATIVE TEAM

Writer Kieran Carroll
Director Louise Fischer
Performed by Matthew Charleston, Ben MacLaine and Victoria Beck
Music by John Kennedy, Murray Cook and Paul Scott

PRODUCTION HISTORY

Extensive

Photo by The Spooky Men



TOUR READY

ARTFORM
Music

AUDIENCE
General

LENGTH
70 mins

CONTACT

Claire Olivia Edwardes
claire@ensembleoffspring.com

FOR MORE
ensembleoffspring.com

The Surge

ENSEMBLE OFFSPRING

ABOUT THE PROJECT

The 1990s were a riot of transformation that redefined both Australia and the world. Creative Nation announced the central role of art in life and society, while the *Mabo* decision set off a chain reaction culminating in Paul Keating's historic *Redfern Address* and the Australian Parliament's landmark *Native Title Act* in 1993. The internet began to insinuate itself into every corner of contemporary experience, reshaping everything it touched. The scientific community, meanwhile, spoke with increasing urgency of the mounting evidence of anthropogenic climate change, while politicians turned a deaf ear. What are the sounds of this crucial decade? With original live video by Peachey and Mosig, this will be a multi-layered feast of music, ideas, lessons from the past and with a little luck hope for the decade ahead!

ABOUT THE COMPANY

Ensemble Offspring is dedicated to telling Australian stories through the music of our time. Over the past 26 years the group have fostered the creation of over three hundred new works. They create musical experiences in unusual venues that stimulate the senses and pique curiosity. Winners of the 2019 Sidney Myer Performing Arts and 2016 APRA Award for Excellence, they have performed all over the world. Through Hatched Academy and First Nations programs, they foster emerging and traditionally under-represented artists.

CREATIVE TEAM

Artistic Director & Percussion
Claire Edwardes
Live video Paul Mosig
Clarinets Jason Noble
Violin Veronique Serret
Piano Sonya Lifschitz
Guitars Andrew Blanch and Vladimir Gorbach
Double Bass Ben Ward

PRODUCTION HISTORY

Extensive

Photo by Peter Hislop



TOUR READY

ARTFORM
Theatre

AUDIENCE
12+ years

LENGTH
90 mins (45 mins performance,
45 mins interactive puzzles)

CONTACT

Jenna Mathie
jenna@norpa.org.au

FOR MORE
norpa.org.au

The UnderLibrary of UnOfficial Histories

NORPA

ABOUT THE PROJECT

The UnderLibrary of UnOfficial Histories is part theatre, part game, part interactive research project, providing a theatrical lens through which teachers and students engage in the Stage Two History syllabus. *The UnderLibrary* entices classes into a rescue mission starting with the arrival of postcards and artefacts sent from different periods of time in the lead up to the in-school performance. On the day, children are introduced to Zelda who shares the story of a library called Mr Finch and her missing brother Albus. The children then help Zelda solve a number of puzzles and gather clues that will help her find her brother and restart history.

ABOUT THE COMPANY

Based in Lismore, NORPA is a company that makes theatre from the ground up. We take inspiration from the country and culture around us. We program and co-produce shows by leading national companies too, but creating original Australian work is at the heart of what we do and why we exist.

CREATIVE TEAM

Co-creators
Valley Lipcer and Caleb Lewis
Writer & Game Designer Caleb Lewis
Director & Dramaturg Valley Lipcer
Performer Melia Naughton
Costume and Set Design
Charlotte Haywood and Ed Horne
Education Resources Valley Lipcer
with contribution from Alice Tate
Graphic Designer Anja Roehrdanz

PRODUCTION HISTORY

Pilot Season March 2021
In-school touring November 2021

Photo by Vanessa Kellas



TOUR READY

ARTFORM
Music, dance

AUDIENCE
General

LENGTH
100 mins

CONTACT

Ganathipan Vidura Aruneswaran
garuneswaran@gmail.com

FOR MORE
ganathipan.com

The World Experience

GANATHIPAN

ABOUT THE PROJECT

The World Experience is a celebration of culture through dance and music of Ganathipan. A 100-minute show takes the audience to different landscapes with storytelling/emotive dancing styles showcased such as kuthu, Irish tap, Bharathanatium, contemporary and flamenco. Traditional instruments such as the guzheng, mridangam, trumpet, tin whistle and cajon are woven within contemporary mainstream framework to create a unique, organically relatable sound.

ABOUT THE COMPANY

Ganathipan creates World-Music Artistry through instrumentals that hold traditional influences from places such as India, Spain, China, Ireland and Senegal. The music comes to life via showcasing an eclectic group of musicians and dancers from metropolitan and regional NSW.

CREATIVE TEAM

Creative and Music Director
Ganathipan

PRODUCTION HISTORY

Parramatta, Bankstown 2021 and
digital version

Photo by Ganathipan



Tim

CHRISTINE DUNSTAN PRODUCTIONS

ABOUT THE PROJECT

A stage adaptation by Tim McGarry of Colleen McCulloch's best selling book *TIM*. Mary Horton is a career driven business executive in her late 40s who lives a quiet middle-class suburban life. With no partner or friends, she appears to be emotionally distant, driven solely by her busy career. Her life leaves little room for personal relationships or love. Until she meets Tim, a 25-year-old physically fit labourer loaded with positivity and charm. However, Tim has a mild disability and has been the subject of ridicule and innuendo, despite the strong and protective nature of his family. As their relationship grows Tim illuminates Mary's days with his boyish innocence but will shatter her respectable, ordered life. What begins as a day's labour becomes a life-changing relationship for both of them

ABOUT THE COMPANY

Formed 30 years ago, Christine Dunstan Productions is a small independent theatre production house specialising in producing boutique theatre of the highest quality and specifically made to tour extensively.

IN DEVELOPMENT

ARTFORM
Theatre

AUDIENCE
Adult, subscriber

LENGTH
90 mins

CONTACT

Christine Dunstan Productions
cd@christinedunstan.com.au

FOR MORE
christinedunstan.com.au

CREATIVE TEAM

Adaptor Tim McGarry
Director Darren Yap
Designer James Browne
Composer & Sound Designer Max Lambert
Lighting Designer Benjamin Brockman

PRODUCTION HISTORY

N/A

Stock photo



Tiny Universe

SHOPFRONT ARTS CO-OP AND MILK CRATE THEATRE

ABOUT THE PROJECT

Tiny Universe explores the delineation between inner and outer worlds: what we present to the world, and what is actually happening behind closed doors. It invites audiences to consider what we carry with us through life, and how that changes over time. What are the modicums of self-soothing that occur in our own little corners of our lives? Do we ever get used to the uncertainty that life throws at us?

Tiny Universe reveals how we reckon privately with social pressures, systems, and expectations, through the exploration of set, space, movement, lighting, and text.

ABOUT THE COMPANY

Comprising 60 years of impact in the Australian arts landscape, Shopfront Arts Co-op and Milk Crate Theatre commit to championing the voices of artists from underrepresented communities and backgrounds. Bringing forward the artistic expression of young people and people with lived experience of homelessness, mental health issues, and disability.

TOUR READY

ARTFORM
Theatre

AUDIENCE
12+ years

LENGTH
60 mins

CONTACT

Natalie Rose
natalie.rose@shopfront.org.au

FOR MORE
shopfront.org.au

CREATIVE TEAM

Directors Natalie Rose (Shopfront Arts Co-op) Margot Politis (Milk Crate Theatre)
Devised and performed by Desmond Edwards, Harrison Bishop, Lana Filies, Lily Hayman, Lisa Griffiths, Matthias Nudi, Steve Konstantopoulos, Nick Vagne
Support Artist Lucy Watson
Composer James Peter Brown
Lighting Design Liam O'Keefe
Set Design Margot Politis
Set Realisation Will Jacobs, Jeremy Ainsworth and Sophie Ward
Design Assistant Sam Read
Production Manager Tyler Fitzpatrick

PRODUCTION HISTORY

Sydney 2021

Photo by Clare Hawley



TOUR READY

ARTFORM
Dance theatre

AUDIENCE
General, South Asian diaspora

LENGTH
50 mins

CONTACT

Alice Hatton
alice@performinglines.org.au

FOR MORE
performinglines.org.au/projects/two/

TWO

RAGHAV HANDA AND PERFORMING LINES

ABOUT THE PROJECT

TWO is a joyful celebration of trust and collaboration; an intergenerational, interdisciplinary bromance between a dancer and a musician.

ABOUT THE COMPANY

Performing Lines produces provocative contemporary performance by Australia's most audacious independent artists.

We curate a portfolio of work that is propelled by pressing questions and new ways of seeing the world. We champion the unconventional, the marginal, the rebellious and the new.

CREATIVE TEAM

Creator, Choreographer and Performer Raghav Handa
Tabla Player and Performer Maharshi Raval
Designer Justine Shih Pearson
Dramaturg Julie-Anne Long
Lighting Design Karen Norris
LED Frame Construction Alejandro Rolandi
Producer Performing Lines

PRODUCTION HISTORY

Parramatta 2021

Photo by Joseph Mayers



IN DEVELOPMENT

ARTFORM
Theatre

AUDIENCE
15+ years

LENGTH
N/A

CONTACT

Malcolm Whittaker
malcolm.whittaker@gmail.com

FOR MORE
regrouppercollective.org/ufo

UFO

MALCOLM WHITTAKER

ABOUT THE PROJECT

UFO is a new live-cinema sci-fi theatre work performed on a 1:8 miniature golf course, using exquisitely detailed scale miniatures of the actors. The show depicts a group of very ordinary humans, as they struggle to deal with the perceived crisis at hand when a spacecraft lands on a golf course in their regional Australian town. Within the show the performers manipulate the miniature puppets that represent their characters, whilst simultaneously using cameras to capture the movements and expressions of their figurines. The action takes place on the surface of a tabletop golf course, and the live feed shot by the cast is cut together into a combination of stop motion stills and tracking shots, which are displayed on screens over the golf course for the audience.

ABOUT THE COMPANY

Dr. Malcolm Whittaker works as an artist, writer, researcher, performer, producer and teacher. He holds a PhD for his thesis, *An Intellectual Adventure in Ignorance*, and in 2021 he is working on projects at Shopfront, Punctum, PACT, Brand X, Cementa Festival, Bondi Festival, Griffin Theatre Company, Merrigong Theatre Company and the University of Wollongong. He is a member of the Artistic Directorate at PACT and a Shammgod.

CREATIVE TEAM

Writer Kirby Medway
Director and Designer Solomon Thomas
Sound Designer Tom Hogan
UFO Design Dylan Tonkin
Puppet Design Miri Badger and Chris Howell
Set Realisation Emma White
Performed by Matt Abotomey, James Harding, Angela Johnston and Tahlee Leeson
Creative Producer Malcolm Whittaker

PRODUCTION HISTORY

Canberra 2019

Photo by Gabriel Castro



TOUR READY

ARTFORM
Theatre

AUDIENCE
Subscribers

LENGTH
80 mins

CONTACT

Jeremy Waters
jeremy@outhousetheatre.org

FOR MORE
outhousetheatre.org

Ulster American

OUTHOUSE THEATRE CO

ABOUT THE PROJECT

Ulster American is by acclaimed Northern-Irish born playwright David Ireland. Set in the jungle of post-#MeToo show business, this ferocious comedy brilliantly skewers the hypocrisy of men in power who trumpet their 'wokeness'. A talented female playwright, an Oscar-winning actor and an ambitious theatre director meet to discuss a play that promises glory for all. But as lines are crossed and the power of Hollywood looms, the love-in threatens to descend into mayhem. Winner of the 'Best of Edinburgh' Award, at Edinburgh Festival Fringe, Outhouse presented the smash-hit, sold out Sydney Premiere at Seymour Centre in 2021.

ABOUT THE COMPANY

Formed in NYC and based in Sydney, Outhouse Theatre Co is driven by a cross-cultural spirit. We produce daring, new, international playwrighting that confronts the challenges of living in the modern world. We have built a strong audience base while garnering critical praise, including the 2019 Sydney Theatre Award for Best Independent Production.

CREATIVE TEAM

Writer David Ireland
Director Shane Anthony
Assistant Director Molly Haddon
Production Manager Craig Baldwin
Set & Lighting Design Veronique Benett
Stage Manager Anastasia Mowen
Costume Design Claudia Kryszkiewicz
Sound Design Mary Rapp
Dialect Coach Linda Nicolls-Gidley
Fight Choreographer Tim Dashwood
Performed by Harriet Gordon-Anderson, Brian Meegan and Jeremy Waters
Producer Jeremy Waters

PRODUCTION HISTORY

Sydney 2021

Photo by Richard Farland



TOUR READY

ARTFORM
Theatre

AUDIENCE
Young adult

LENGTH
40 mins

CONTACT

Cathy Pertocz
cathypetocz@gmail.com

FOR MORE
cathypetocz.com

Unbecoming

CATHY PERTOCZ

ABOUT THE PROJECT

Unbecoming is a short play exploring the cultural object of the dead girl and how she is fetishised and voiceless as (usually) male detectives work out their psychic problems by solving her murder. In this play the dead girl solves the mystery of her death herself. The celebrated dead girl Laura Palmer - the homecoming queen of all dead girls - is usually white, while the deaths of women of colour go unnoticed. Ado, the ghost dead girl of *Unbecoming*, is black and centre-stage, telling her story as she sees it and walking through walls as she does so.

ABOUT THE COMPANY

I make work which takes an audience to a surreal and magical place in order for them to reflect on their real lives and the real lives of others. I make work with a deep intersection feminist theoretical base yet which is funny, warm-hearted, and fearless in grappling with dark themes. My work always relishes what is important about theatre, the collective witnessing and imagining of the audience.

CREATIVE TEAM

Playwright/Director/Designer Cathy Petocz
Lighting Design Anthony Arblaster
Composition and Sound Design Cilt (Hannah de Feyter and Becki Whitton)
Performed by Isabel Burton

PRODUCTION HISTORY

Canberra 2019

Photo by Shelly Higgs



IN DEVELOPMENT

ARTFORM
Musical theatre

AUDIENCE
Subscriber

LENGTH
150 mins, inc interval

CONTACT

Ylaria Rogers
ylaria_rogers@hotmail.com

FOR MORE
facebook.com/heartstringstheatreco/

Urinetown The Musical

HEART STRINGS THEATRE CO

ABOUT THE PROJECT

Urinetown is a recycled musical, set in a dystopian society that is ruled by Covid and struggling against a drought. The musical utilises recycled materials for both the set and the costumes. It looks at the patriarchy and what happens for better and for worse in times of struggle when the poor can't find a way through and those with money are calling the shots.

CREATIVE TEAM

Director Ylaria Rogers
Musical Director Leisa Keen
Choreographer Annette Sharpe

PRODUCTION HISTORY

N/A

ABOUT THE COMPANY

A new, Canberra based, Musical Theatre company dedicated to find a home for artists in our hearts and purse strings. Hearts Strings brings Off Broadway style musicals to the stage with a dedication to the craft and talent of performers rather than big sets and costumes.

Photo by Heartstrings



TOUR READY

ARTFORM
Physical theatre, puppetry

AUDIENCE
7+ years

LENGTH
50 mins

CONTACT

Scott Parker
info@matriarktheatre.com

FOR MORE
matriarktheatre.com

Urza and the Song in the Dark

MATRIARK THEATRE

ABOUT THE PROJECT

Urza and The Song in the Dark is a brand-new story for young people set in a subterranean wonderland of complex caves, underground lakes, fantastical creatures, and myths waiting to be discovered.

One day, a mysterious song leads a young girl named Urza on an adventure into the depths of the earth. Along the way she befriends a lost explorer, gets pursued by a mysterious, dark force, and finds herself caught up in a primeval story that may just lead to her saving the world.

Urza and The Song in the Dark brings together amazing puppetry, live songs and original music, and stunningly layered shadow visuals to take audiences on an epic journey they won't soon forget.

ABOUT THE COMPANY

Matriark Theatre builds worlds made of stories, sparking imaginations and inspiring young people to unleash their creativity. Matriark is a small organisation with a huge footprint. We produce a broad range of work for young people from live theatre to roaming performances, puppetry, festivals, digital media, live music, podcasting, zines, education programs in schools and more.

CREATIVE TEAM

Created & Performed by Matriark Theatre
Director Scott Parker
Design and Realisation Aleisa Jelbart
Lighting Design Benjamin Brockman
Sound Design Kathryn Roberts-Parker
Other instrumentation Roman Benedict and Sam Kelly
Performed by Madeleine McWilliam, Drew Wilson, Kathryn Parker and Aleisa Jelbart

PRODUCTION HISTORY

Sydney, Central Coast, Northern Rivers 2019-2021

Photo by Robert Catto



TOUR READY

ARTFORM
Music

AUDIENCE
General

LENGTH
90 mins

CONTACT

Les Currie
lescurrie@optusnet.com.au

FOR MORE
victormartinezparada.com

Victor Martinez Parada in Concert

LES CURRIE PRESENTATIONS

ABOUT THE PROJECT

Victor Martinez Parada is an exceptional classical guitarist who over the years has refined his technique so he is unlike any other player in the world. Classically trained he now plays not only classical greats but Latin-American folk, jazz, avant-garde and his own fantasies on pop. Victor's on-stage warmth and humbleness competes with his technical brilliance. Victor has toured South America, Japan and represented Australia at World Expo's in Japan and China.

ABOUT THE COMPANY

Over a 50 year career Les Currie has toured productions throughout Australia and brought in productions from overseas. He has managed venues, produced events, concerts and theatre productions so with that accumulated experience can be relied upon to present a quality production.

CREATIVE TEAM

Artist Victor Martinez Parada
Director Les Currie

PRODUCTION HISTORY

Extensive

Photo by Les Currie



TOUR READY

ARTFORM
Theatre

AUDIENCE
Women, feminist audience, LGBTQI+

LENGTH
60 mins

CONTACT

Janie Gibson
janieelizabethgibson@gmail.com

FOR MORE
janie-gibson.com

Voices Of Joan

JANIE GIBSON

ABOUT THE PROJECT

Voices of Joan is a feminist punk ritual that calls on the spirit of iconic iconoclast Joan of Arc. In an intimate solo performance, theatre-maker Janie Gibson unravels the tangled threads of misogyny and Catholicism as she searches for Joan's voice in fragments of history, fantasy & fiction. With direction by Anu Almagro (Polish experimental theatre company 'Song of the Goat') we witness Gibson trade clothes with the audience, play a bishop in drag, rally the crowd from behind a megaphone and incite the audience to build Joan's pyre. With a wireless radio as their time machine the artists tune into echoes of Joan in acts of courage and oppression throughout history in search of a road map for resistance in our uncertain times.

ABOUT THE COMPANY

Janie Gibson is an actor, theatre-maker, director and teaching artist. She uses the ritual of theatre as a forum for human connection; a site to hold radical ideas, witness multivalent perspectives and offer counter-narratives to the confinements of the dominant culture. Her theatre practice is born out of research and training in leading European ensemble theatre, contemporary performance and an ongoing exploration into the human voice and the transformative power of theatre.

CREATIVE TEAM

Performer and Creator
Janie Gibson
Director and Creator Anu Almagro
Composition & Sound Design
Liesl Pieterse
Lighting Design Fausto Brusamolino
Additional Composition Xani Kolac
and Toecutter
Fight Choreography Gabriel Almagro

PRODUCTION HISTORY

Adelaide 2020
Melbourne, Spain 2019

Photo by Janie Gibson



TOUR READY

ARTFORM
Theatre

AUDIENCE
Subscriber

LENGTH
85 mins

CONTACT

Di Smith
dianesmith@iinet.net.au

FOR MORE
wildthingproduction.com

Wild Thing

WILD THING PRODUCTIONS

ABOUT THE PROJECT

How far would you go for a friend? A comedy, a tragedy. A tale of sea eagles, pole dancing and childhood dreams, of love, rock n roll and friendships which have stood the test of time. Until now. Hilarious, outrageous and confronting, the writer gives us four lead roles for women in their sixties. Jackie, Elizabeth, Frances and Susan meet at school in the country. They make it a rule to meet once a year for the Musketeer's dinner. But this year will be different. Jackie, the most radical member of the group, is in crisis. Shaken by this news, the women take Jackie back to her country home for a weekend. This will allow them to spend some fun time together, which they haven't done in years. What could possibly go wrong? The growing nightmare will test their friendship, their morals and their courage as never before. And a final twist in the tale will change their lives forever

ABOUT THE COMPANY

This mature company brings a wealth of talent and theatrical experience: seasoned, well-known actors, an award winning author and a production team that boasts some of Australia's best practitioners. The themes of female friendship and life choices are ever present in our reality. *Wild Thing* began around Lewis Fitz-Gerald's kitchen table early in 2017, with Penny Cook and Katrina Foster, NIDA classmates and Australian stage stalwarts.

CREATIVE TEAM

Writer Suzanne Hawley
Director Kim Hardwick
Set Design Tom Bannerman
Costume Design Robert Bayliss
Lighting Design Martin Kinnane
Sound Design Patrick Howard
Original music Leonardo Bosi
Performed by Di Smith, Katrina Foster, Helen O'Connor, Lewis Fitzgerald and Philip D'Ambrosio

PRODUCTION HISTORY

Sydney 2021

Photo by Lisa Tomasetti



TOUR READY

ARTFORM
Theatre

AUDIENCE
Subscriber, teen

LENGTH
80 mins

CONTACT

Jordan Best
jordan.best@qprc.nsw.gov.au

FOR MORE
theq.net.au/echo-theatre-co/

Wolf Lullaby

ECHO THEATRE

ABOUT THE PROJECT

An Australian classic, *Wolf Lullaby* is unique. A crime thriller, a psychological drama, a story of family and parenting; in so many ways it's a small story, but it deals with events that are unfathomably huge. It is exciting and unsettling, and every person who sees it has a different opinion of what really happened, and a different way that they would have handled the situation.

ABOUT THE COMPANY

Echo Theatre is a professional, regional, theatre company producing work by female playwrights. We offer pathways and platforms for the talented theatre-makers and artists in our region.

CREATIVE TEAM

Writer Hillary Bell
Director Jordan Best
Set Designer Chris Zuber
Lighting Designer Jacob Aquilina
Performed by Natasha Vickery, Craig Alexander, Joel Horwood and Rachel Pengilly

PRODUCTION HISTORY

Queanbeyan 2021

Photo by Cathy Breen



You're Not Special

ROGUE PROJECTS

ABOUT THE PROJECT

Sam O'Sullivan's wicked new play about relationships, technology and the dangerous line between truth and fiction in the digital age. *You're Not Special* is a dark comedy about life and love in the modern age. It's about how our interactions with the world are changing before our eyes and robbing us of basic human experiences. It's about where we are heading as a species and what we have done to ourselves. But most of all, it's about you.

ABOUT THE COMPANY

Rogue Projects is an award-winning Sydney-based independent arts producer. We believe in championing invisible artists, nurturing great talent by holding the door open for artists without opportunity, and we seek stories that are not on our stages, fostering relationships with writers and directors to realise great new Australian work.

TOUR READY

ARTFORM
Theatre

AUDIENCE
Subscriber

LENGTH
90 mins

CONTACT

Robbi James
producer@companyrogues.com

FOR MORE
rougeprojects.com.au

CREATIVE TEAM

Writer Sam O'Sullivan
Director Samantha Young
Dramaturg Dominic Mercer
Performed by Arkia Ashraf,
Kate Skinner and Ariadne Sgouros
Stage Manager
Christopher Starnawski
Assistant Stage Manager
Talia Meyerowitz-Katz
Lighting Design Martin Kinnane
Costume & Set Design
Anna Gardiner
Sound Design Kaitlyn Crocker
Poster Photograph Parker Floris
Production Image Kate Williams
Producers Robbi James and
Erica Lovell
Associate Producer
Talia Meyerowitz-Katz

PRODUCTION HISTORY

Sydney 2021

Photo by Australian Theatre Live

ARTS ON TOUR

Our vision is for every community in Australia to have a creative pulse, made stronger by the arts experiences we bring.

Arts on Tour is the peak body for performing arts touring in NSW. Our overarching purpose is to bring culturally distinctive and resonant arts experiences to towns and cities across the country, and maximise the lasting impact of this activity for communities and audiences, artists and the sector.

Funded by Create NSW, we are widely recognised as leading on best practice in touring. Our core service is collaborating with producing companies based in NSW and presenting venues nationally to develop and deliver a diverse range of tours across genres. Our program also includes events and initiatives that build touring capacity across the sector, broaden the reach of professional work to smaller and more remote towns in NSW, and maximise the impact of touring productions in the communities we work with.

TEAM

Executive Director ANTONIA SEYMOUR
Touring Services Manager SARA RICHARDSON
Touring Coordinator PATRICK HOWARD
Project Manager & Salon Producer KATE GAUL
Project Coordinator CHANTELE SIVES
Marketing Manager CATH WADLING

BOARD

AARON BEACH — CHAIR
TRAVIS DE VRIES
NICOLE HERCUS
JESSICA IULIANO
MITCH KING
CRAIG MILBURN
KAREN PATTERSON
MICHELLE PEARCE
PRIYA ROY

THANK YOU

Thanks you to the following people for their support – Catherine Swallow, Jenna Mathie, Danielle Andrews, James Winter, artists, producers and presenters across NSW.

FEEDBACK

We'll send you a survey and we'd love you to fill it in. If you hate surveys and just want to say it like it is, please send an email to Kate Gaul on project@artsonstour.com.au





Arts on Tour
L1, 4 Pitt Street
Redfern NSW 2016
02 8038 1880
artsontour.com.au

